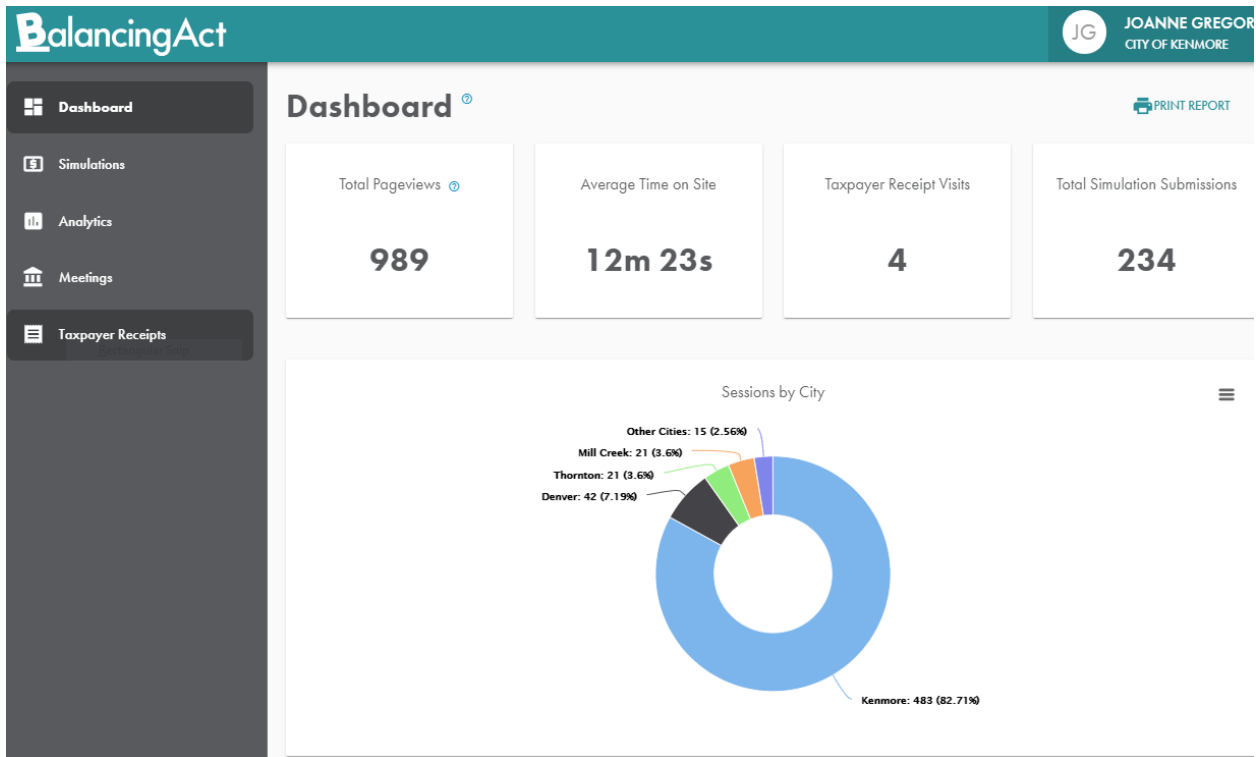
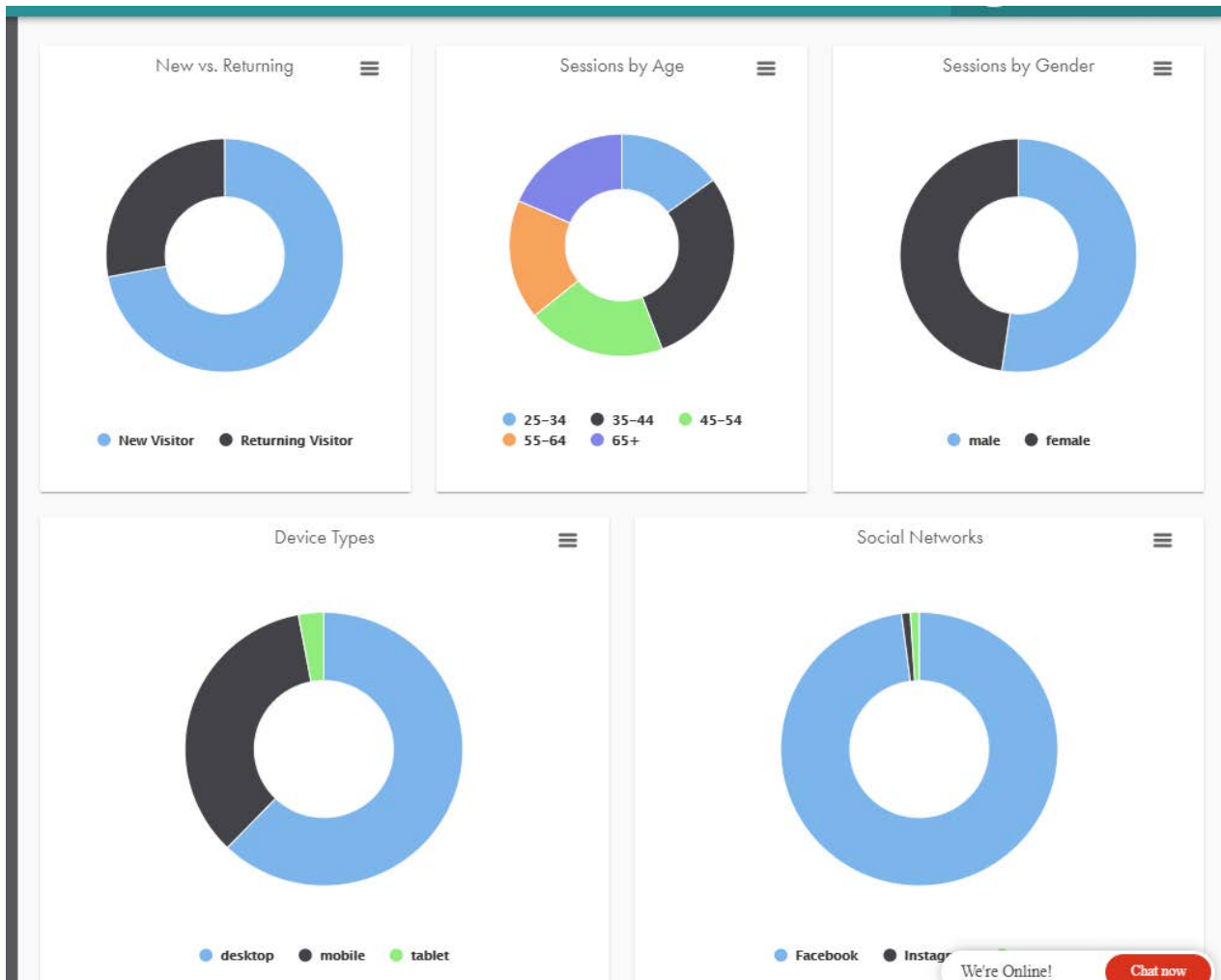


City of Kenmore, Washington
Balancing Act High Level Summary of Results August 2020



City of Kenmore, Washington
Balancing Act High Level Summary of Results August 2020



City of Kenmore, Washington

Balancing Act High Level Summary of Results August 2020

Top Referrers

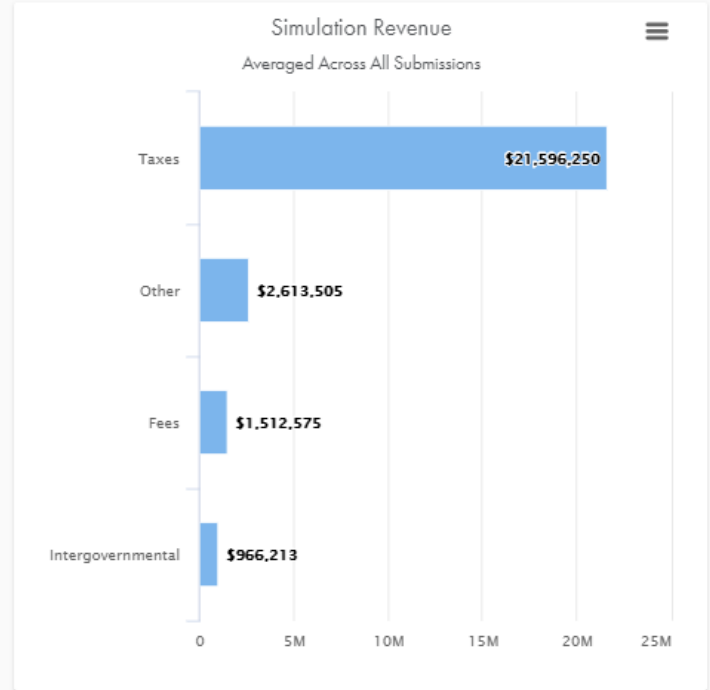
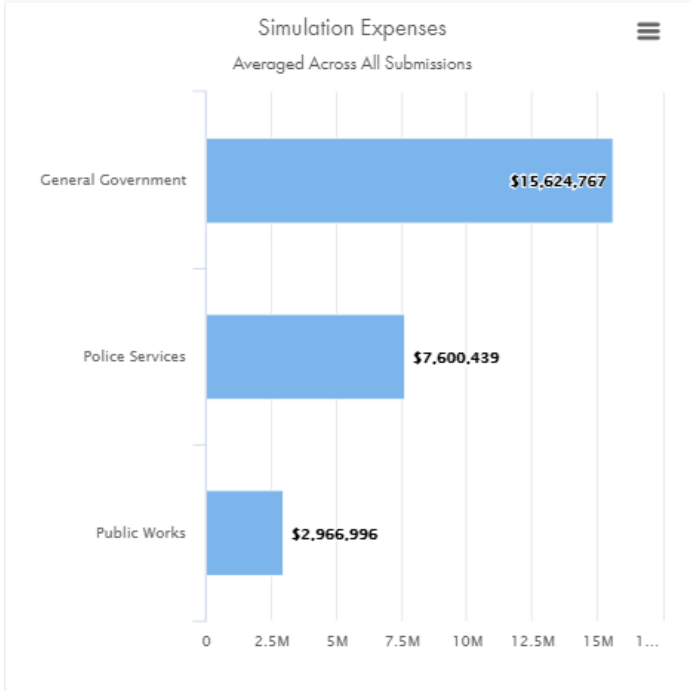
Source	%	#
kenmorewa.gov/	46.9%	318
(direct)	30.38%	206
m.facebook.com/	10.32%	70
google	2.8%	19
facebook.com/	2.21%	15
coronaca.gov/government/departments-divisions/finance-division/tax-receipt-balancing-act	1.47%	10
nextdoor.com/	1.33%	9
l.facebook.com/	1.03%	7
mail.google.com/mail/mu/mp/30/	0.74%	5
charlottesville.org/departments-and-services/departments-a-g/budget-and-performance-management	0.74%	5

City of Kenmore, Washington
Balancing Act High Level Summary of Results August 2020

Simulation Level Data

2021-2022 Biennial Budget Projection

Choose an Active or Inactive simulation



City of Kenmore, Washington

Balancing Act High Level Summary of Results August 2020

Top Revenue Increased

Average of All Increases Across All Submissions

Taxes	\$489,531
Other	\$382,857
Fees	\$0

Top Revenue Decreased

Average of All Decreases Across All Submissions

Taxes	-\$0
Other	-\$0
Fees	-\$0

Top Expenses Increased

Average of All Increases Across All Submissions

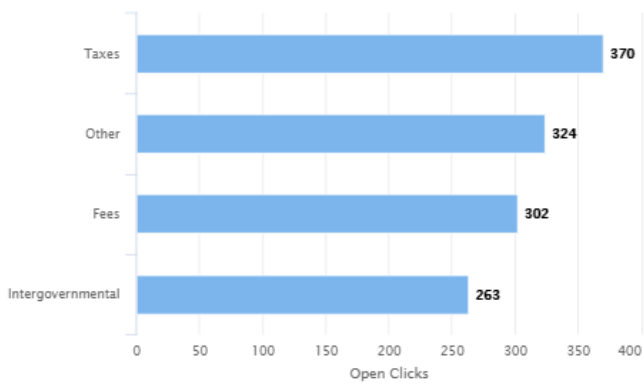
Public Works	\$416,789
General Government	\$203,375
Police Services	\$90,326

Top Expenses Decreased

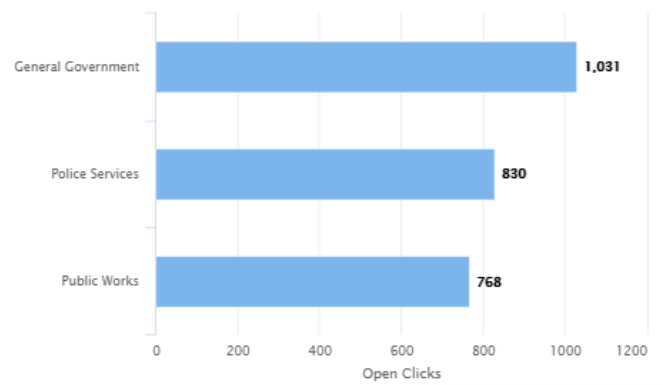
Average of All Decreases Across All Submissions

Police Services	-\$548,269
General Government	-\$286,385
Public Works	-\$267,964

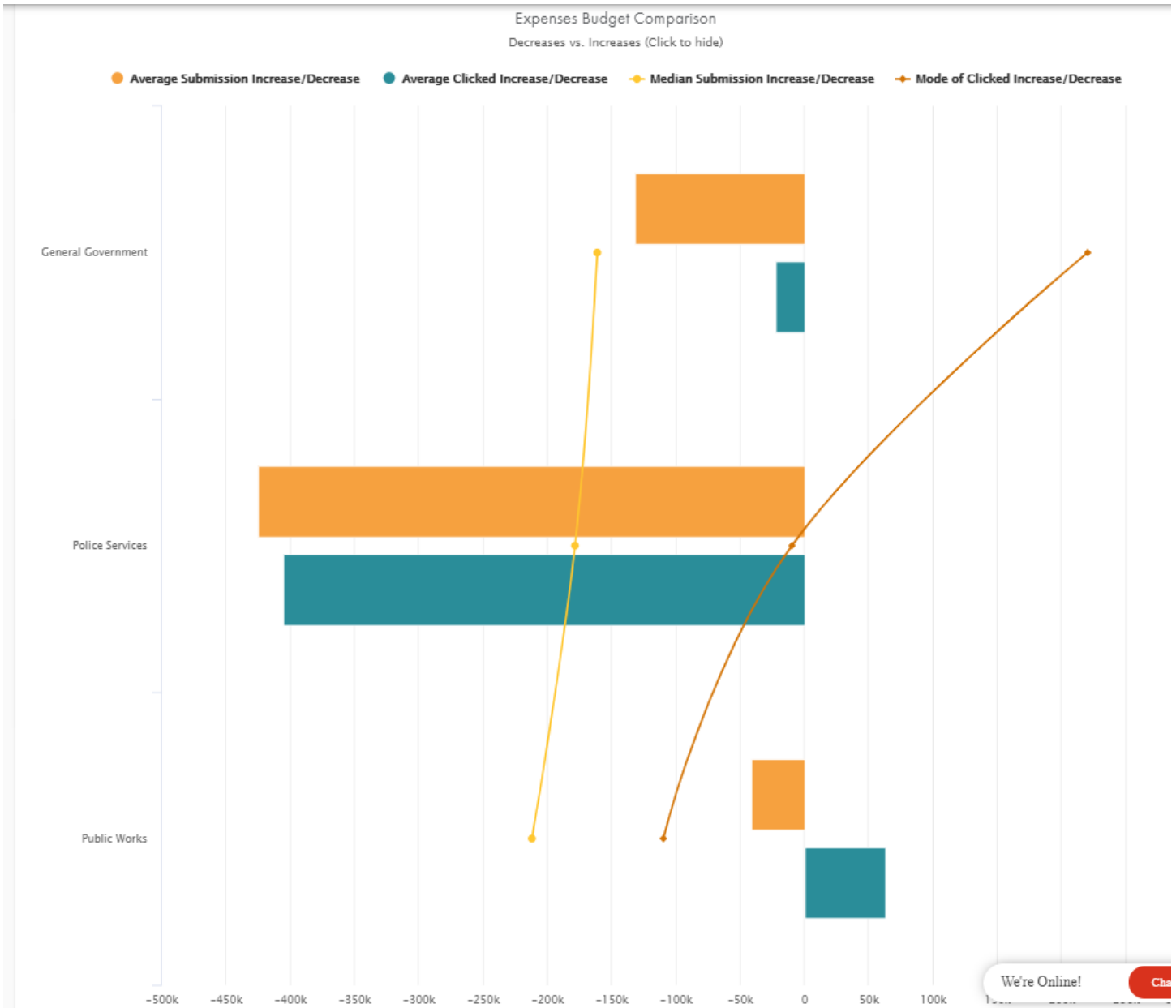
Opens by Revenue Category



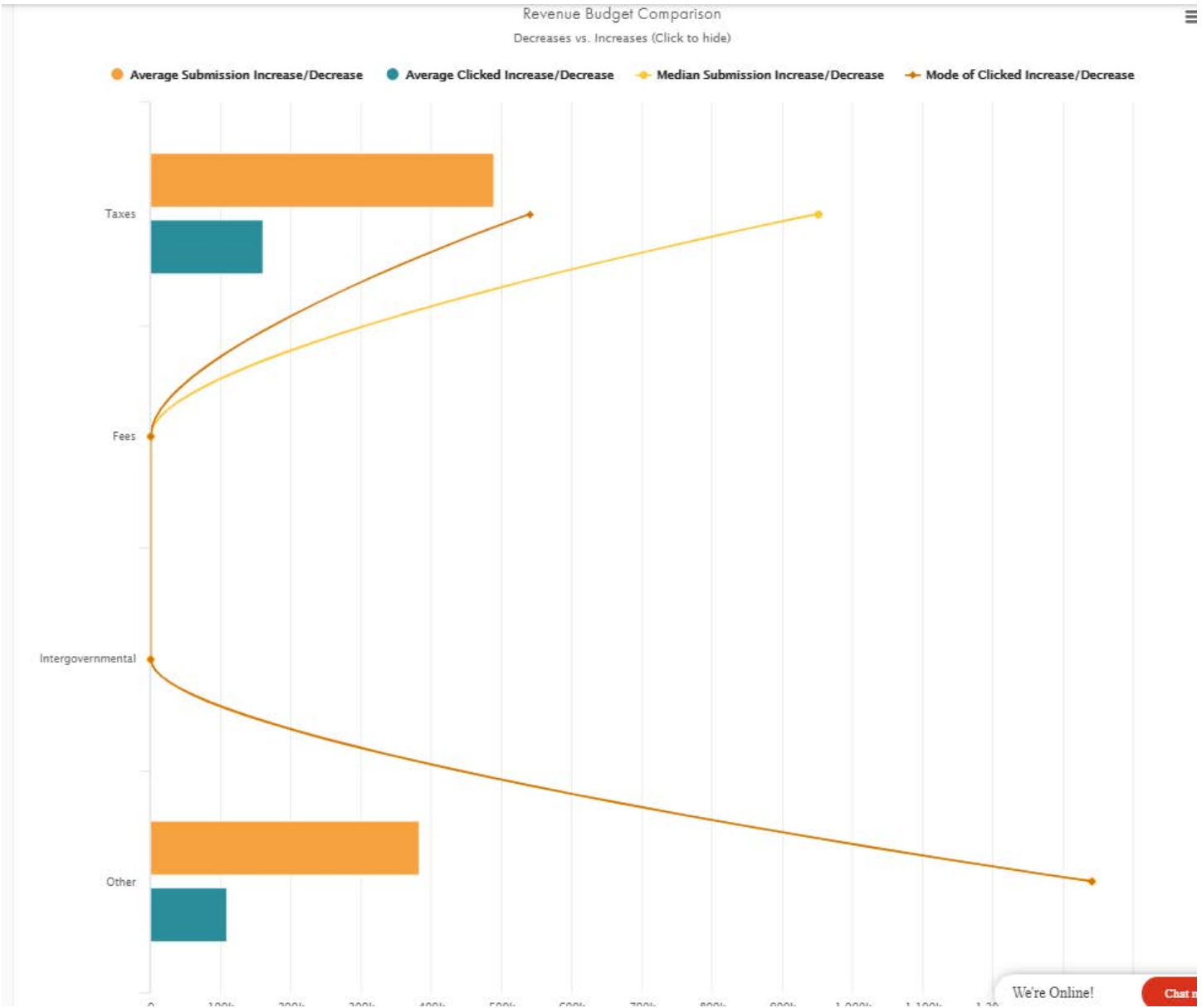
Opens by Expense Category



City of Kenmore, Washington Balancing Act High Level Summary of Results August 2020



City of Kenmore, Washington
 Balancing Act High Level Summary of Results August 2020



City of Kenmore, Washington

Balancing Act High Level Summary of Results August 2020

Category Breakdown

Category ↑	Increased Amt Submitted	Increase Clicks	Decreased Amt Submitted	Decrease Clicks	Net Submitted	Interaction %	Opens	Info Clicks	Details Clicks
Fees	\$0	0	\$0	0	\$1,512,575	0%	302	0	0
General Government	\$203,375	7397	\$286,385	24799	\$15,024,767	85.28%	1031	126	0
Intergovernmental	\$0	0	\$0	0	\$966,213	0%	263	59	0
Other	\$382,667	0	\$0	0	\$2,613,505	28.57%	324	65	0
Police Services	\$90,326	669	\$548,269	2624	\$7,600,439	73.59%	830	96	0
Public Works	\$416,789	431	\$267,964	2198	\$2,966,996	65.37%	768	110	0
Taxes	\$489,531	0	\$0	0	\$21,596,250	39.83%	370	0	0

Approximate User Residence Location

