



175TH WAYFINDING CHANNELIZATION IMPROVEMENTS PROJECT

PROJECT NO. T-234
CONTRACT NO. 23-C2902

CITY COUNCIL

Nigel Herbig, Mayor
Melanie O'Cain, Deputy Mayor
David Baker
Angela Kugler
Joe Marshall
Corina Pfeil
Debra Srebnik

CITY MANAGER

Rob Karlinsey

CITY ENGINEER

John Vicente, P.E.

PROJECT MANAGER

Kent Vaughan, P.E.

UTILITY CONTACTS

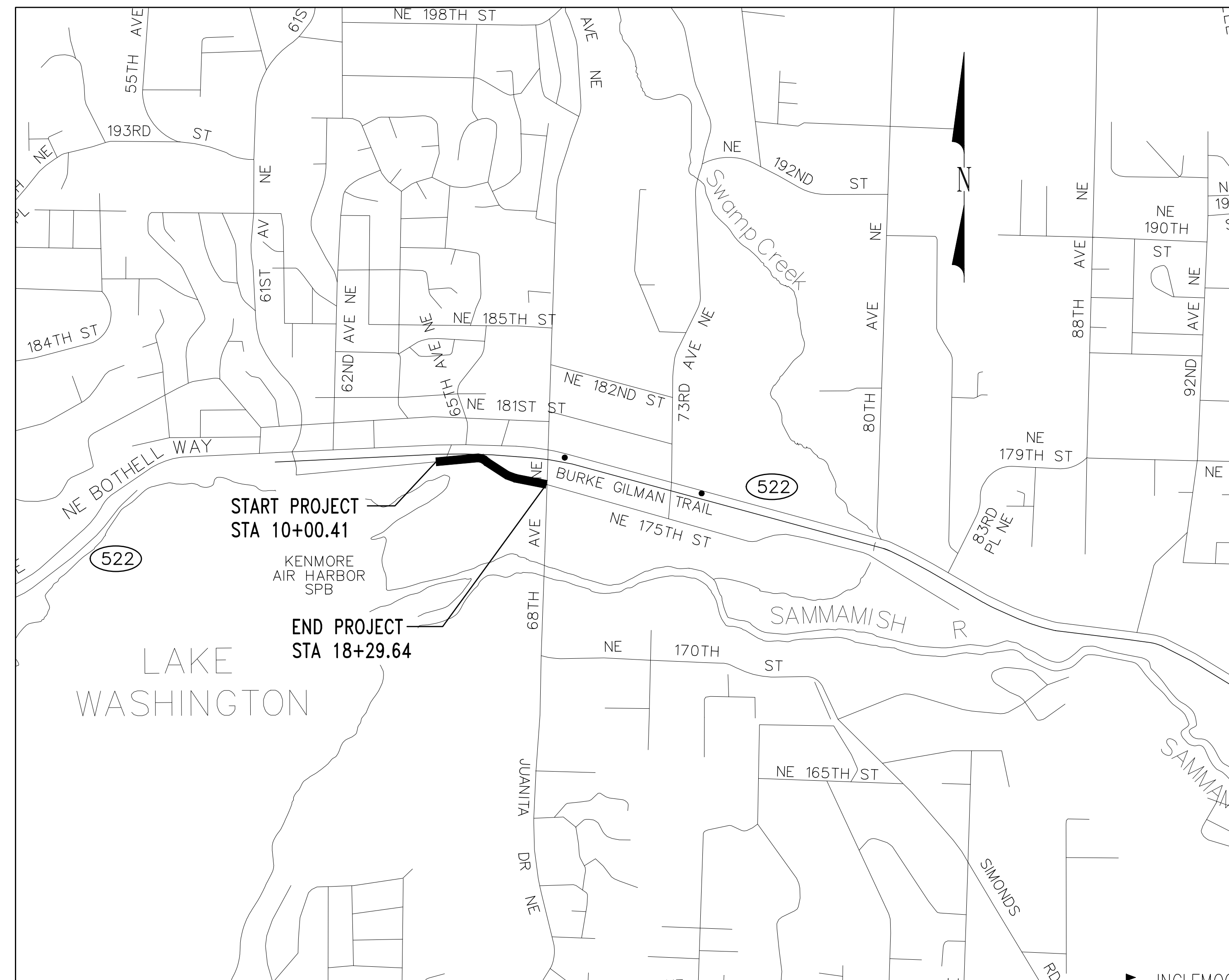
NORTHSHORE UTILITY DISTRICT (NUD):
George Matote, 425-398-4400

PUGET SOUND ENERGY (PSE):
Kris Leach, 425-429-5967
Jeanne Coleman, 425-463-6550

ZIPLY:
Nick Nicholson, 208-225-9764

MCI VERIZON:
Scott Christenson, 425-471-1079

SHEET INDEX		
SHEET	SHEET NO.	SHEET TITLE
CV01	1	COVER SHEET, SHEET INDEX, NOTES, AND VICINITY MAP
GN01	2	ABBREVIATIONS, LEGEND, AND SURVEY NOTES
TS01	3	TYPICAL SECTIONS
PV01-PV03	4-6	PAVING PLAN
CH01-CH03	7-9	CHANNELIZATION PLAN
MSD01	10	MISCELLANEOUS DETAILS
TC01-TC02	11-12	TRAFFIC CONTROL PLAN



VICINITY MAP
NTS

APPROVED FOR CONSTRUCTION

City of Kenmore

Date

BID SET



Know what's below.
Call before you dig.

Name: MICHAELV Date: Apr 21, 2023-01:57:55pm File: \\kpf.com\Civil\2000001-2009999\200107 Kenmore Trans On-Call (No. 19-C2098)\Task Order 14 - 175th Wayfinding\CADD\Sheets\KM175-CV.dwg

No	Date	Revision	By	Appr

CITY OF KENMORE
Public Works Engineering
18120 68th Ave NE
Kenmore, WA 98028
425-398-8900

DRAWN BY
MRV
CHECKED BY
NDA
DATE: 04/25/2023
JOB No. : 2000107



kpff
1601 5th Avenue, Suite 1600
Seattle, WA 98101
206.622.5822
www.kpff.com

175TH WAYFINDING
CHANNELIZATION IMPROVEMENT
COVER SHEET, SHEET INDEX
& VICINITY MAP

SHEET 1 OF 12

CV01

SCALE: NTS

Name: MICHAELV Date: Apr 21, 2023-01:57:59pm File: \\kpf.com\Civil\2000001-2009999\200107 Kenmore Trans On-Call (No. 19-C2099)\Task Order 14 - 175th Wayfinding\CADD\Sheets\KM175-GM.dwg

CONTROL POINT TABLE				
POINT	NORTHING	EASTING	ELEVATION	DESCRIPTION
1	279338.4280	1291993.8220	35.5000	MAGNAIL
2	279528.8100	1291982.1540	35.5200	MAGNAIL
3	279581.0530	1291841.0510	29.2800	MAGNAIL
4	279554.7140	1291645.5200	26.7500	MAGNAIL
5	279697.4880	1291500.7800	30.6300	MAGNAIL
6	279833.7040	129255.7110	33.1900	HUB/MAGNAIL
7	279841.5140	1291025.4200	33.4000	MAGNAIL
8	279861.7870	1290744.3420	35.4000	MAGNAIL

GENERAL NOTES:

- EXISTING UTILITIES HAVE BEEN LOCATED BASED ON BEST AVAILABLE INFORMATION. CONTRACTOR IS RESPONSIBLE TO VERIFY UTILITY LOCATIONS AND NOTIFY ENGINEER IF THERE IS A CONFLICT WITH PROPOSED FEATURES.
- PARCEL LINES ARE APPROXIMATE AND ARE FOR REFERENCE ONLY.

BASIS OF MERIDIAN:

WASHINGTON STATE PLANE COORDINATE SYSTEM, NAD 83/91, NORTH ZONE 4601.

VERTICAL DATUM:

NAVD 88 CONTRACTOR TO VERIFY VERTICAL DATUM WITH TIES TO TOPOGRAPHIC FEATURES AND PROVIDED CONTROL POINTS PRIOR TO START OF CONSTRUCTION.

UTILITY NOTE:

UTILITIES SHOWN HEREON ARE PER KPFF ON SITE SURVEY OF SURFACE FEATURES IN CONJUNCTION WITH UNDERGROUND UTILITY LOCATES PERFORMED BY KPFF. AS WELL AS AS-BUILT DATA ON FILE AT THE OFFICE OF KPFF. ALL UTILITIES SHOWN HEREON SHOULD BE CONSIDERED APPROXIMATE ONLY AND SHOULD BE VERIFIED PRIOR TO EXCAVATION.

BOUNDARY NOTE:

RIGHT OF WAY INFORMATION SHOWN HEREON IS PER BEST AVAILABLE RECORD INFORMATION AND TIES TO LOCAL MONUMENTATION. PROPERTY LINES SHOWN HEREON ARE PER KING COUNTY GIS AND ARE SHOWN FOR GRAPHICAL PURPOSES ONLY AND SHOULD NOT BE CONSTRUED AS A SURVEYED BOUNDARY LINE.

METHOD OF SURVEY:

CONTROL SURVEY PERFORMED USING GPS/RTK METHODS WITH THE USE OF TOPCON GR5 RECEIVERS, SUPPLEMENTAL CONTROL SURVEY AND TOPOGRAPHIC SURVEY PERFORMED USING A TOPCON GT 503 ROBOTIC TOTAL STATION.

THE SURVEY WORK PERFORMED DURING THE COURSE OF THIS SURVEY MEETS OR EXCEEDS THE STANDARDS AS SET FORTH IN WAC 332-130-090.

SURVEY WORK PERFORMED IN MAY OF 2022.

ABBREVIATIONS:

Δ	DELTA
AC	ASPHALT CONCRETE
ACP	ASPHALT CONCRETE PAVEMENT
AP	ANGLE POINT
APPR	APPROVED
APPROX	APPROXIMATE
AVE	AVENUE
BBOC	BOTTOM OF BACK OF CURB
BLDG	BUILDING
CB	CATCH BASIN
CCTV	CLOSED CIRCUIT TELEVISION
CKRS	CITY OF KENMORE ROAD STANDARDS
CL	CENTERLINE
CL	CLASS
CONC	CONCRETE
CONT'D	CONTINUED
CSBC	CRUSHED SURFACING BASE COURSE
CSTC	CRUSHED SURFACING TOP COURSE
CW	CONCRETE WALKWAY
CY	CUBIC YARDS
DIA	DIAMETER
DI	DUCTILE IRON
DWG	DRAWING
DWY	DRIVEWAY
E	EAST, EASTING
EG	EXISTING GRADE
EL	ELEVATION
EX/EXIST	EXISTING
ESMT	EASEMENT
FG	FINISHED GRADE
FL	FLOW LINE
FOC	FACE OF CURB
FT	FOOT/FEET
GAL	GALLON
GPS	GLOBAL POSITIONING SYSTEM
HMA	HOT MIXED ASPHALT

ABBREVIATIONS CONT'D:

HT	HEIGHT
IE	INVERT ELEVATION
IN	INCH
H, HORIZ	HORIZONTAL
KC	KING COUNTY
KCRS	KING COUNTY ROAD DESIGN AND CONSTRUCTION STANDARDS
KSD	KENMORE STANDARD DETAILS
L	LENGTH
LF	LINEAR FEET
LSCAPE	LANDSCAPE
LT	LEFT
MAX	MAXIMUM
MIN	MINIMUM
MH	MAINTENANCE HOLE
MIN	MINIMUM
MMA	METHYL-METHACRYLATE
MPH	MILES PER HOUR
MUTCD	MANUAL ON TRAFFIC CONTROL DEVICES
N	NORTH, NORTHING
N/A	NOT APPLICABLE
NAVD	NORTH AMERICAN VERTICAL DATUM
NE	NORTHEAST
NIC	NOT IN CONTRACT
NO.	NUMBER
NTS	NOT TO SCALE
O.C.	ON CENTER
OD	OUTSIDE DIAMETER
PC	POINT OF CURVATURE
PCC	POINT OF COMPOUND CURVE
PCCP	PORTLAND CEMENT CONCRETE PAVEMENT
P.E.	PROFESSIONAL ENGINEER
PG	PROPOSED GRADE
PO	POST OFFICE
POB	POINT OF BEGINNING
POE	POINT OF END
PK	SURVEY CONTROL NAIL

ABBREVIATIONS CONT'D:

PL	PLACE
PT	POINT OF TANGENCY
PVMT	PAVEMENT
QTY	QUANTITY
R	RADIUS, RANGE
RD	ROAD
ROW, R/W	RIGHT-OF-WAY
RRFB	RAPID RECTANGULAR FLASHING BEACON
RT	RIGHT
RTK	REAL TIME KINEMATIC
S	SOUTH
SD	STORM DRAIN
SEC	SECTION
SHT	SHEET
SPEC	SPECIFICATIONS
ST	STREET
STA	STATION
STD	STANDARD
SW	SOUTHWEST
SY	SQUARE YARDS
T	TOWNSHIP/TANGENT
TEL	TELEPHONE
TEMP	TEMPORARY
TYP	TYPICAL
V, VERT	VERTICAL
W	WEST/WATER
W/	WITH
WA	WASHINGTON
WM	WILLAMETTE MERIDIAN
WSDOT	WASHINGTON STATE DEPARTMENT OF TRANSPORTATION

LEGEND:

— SS — SS — SS —	SANITARY SEWER
— SD — SD —	STORM DRAIN
— OH — OH — OH —	OVERHEAD UTILITY
— G — G — G —	GAS LINE
— W — W — W —	WATER LINE
— P — P — P —	UNDERGROUND POWER
— TC — TC — TC —	UNDERGROUND TELECOMMUNICATIONS
— X — X — X — X —	FENCE AS NOTED
— — — — —	EDGE OF PAVEMENT
— — — — —	EDGE OF GRAVEL
— — — — —	SECTION LINE
— — — — —	CENTER LINE
— — — — —	RIGHT OF WAY
	CONCRETE HATCH
	TRUNCATED DOME HATCH

LEGEND CONT'D:

	FOUND MONUMENT
	CONTROL POINTS
	LIGHT JUNCTION BOX
	POWER MAN HOLE
	UTILITY POLE
	TRAFFIC SIGNAL POLE
	TRAFFIC LIGHT
	STREET LIGHT
	YARD LIGHT
	ANCHOR
	JUNCTION BOX
	TELEPHONE POLE
	TELECOMMUNICATIONS MAN HOLE
	TELECOMMUNICATIONS VAULT
	TELECOMMUNICATIONS PEDESTAL

LEGEND CONT'D:

	TRAFFIC SIGNAL CABINET
	FIRE HYDRANT
	WATER METER
	WATER VALVE
	GAS METER
	GAS VALVE
	SANITARY SEWER MAN HOLE
	STORM DRAIN MAN HOLE
	CATCH BASIN
	ROCK
	MAILBOX
	SIGN AS NOTED
	CONIFER AS NOTED
	DECIDUOUS AS NOTED

BID SET



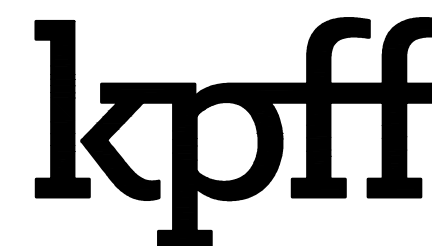
Know what's below.
Call before you dig.

No	Date	Revision	By	Appr

CITY OF KENMORE
Public Works Engineering
18120 68th Ave NE
Kenmore, WA 98028
425-398-8900

DRAWN BY
MRV
CHECKED BY
NDA
DATE: 04/25/2023
J O B No. : 2000107

DESIGNED BY
CJO
APPROVED BY
RJL



1601 5th Avenue, Suite 1600
Seattle, WA 98101
206.622.5822
www.kpff.com

**175TH WAYFINDING
CHANNELIZATION IMPROVEMENT**

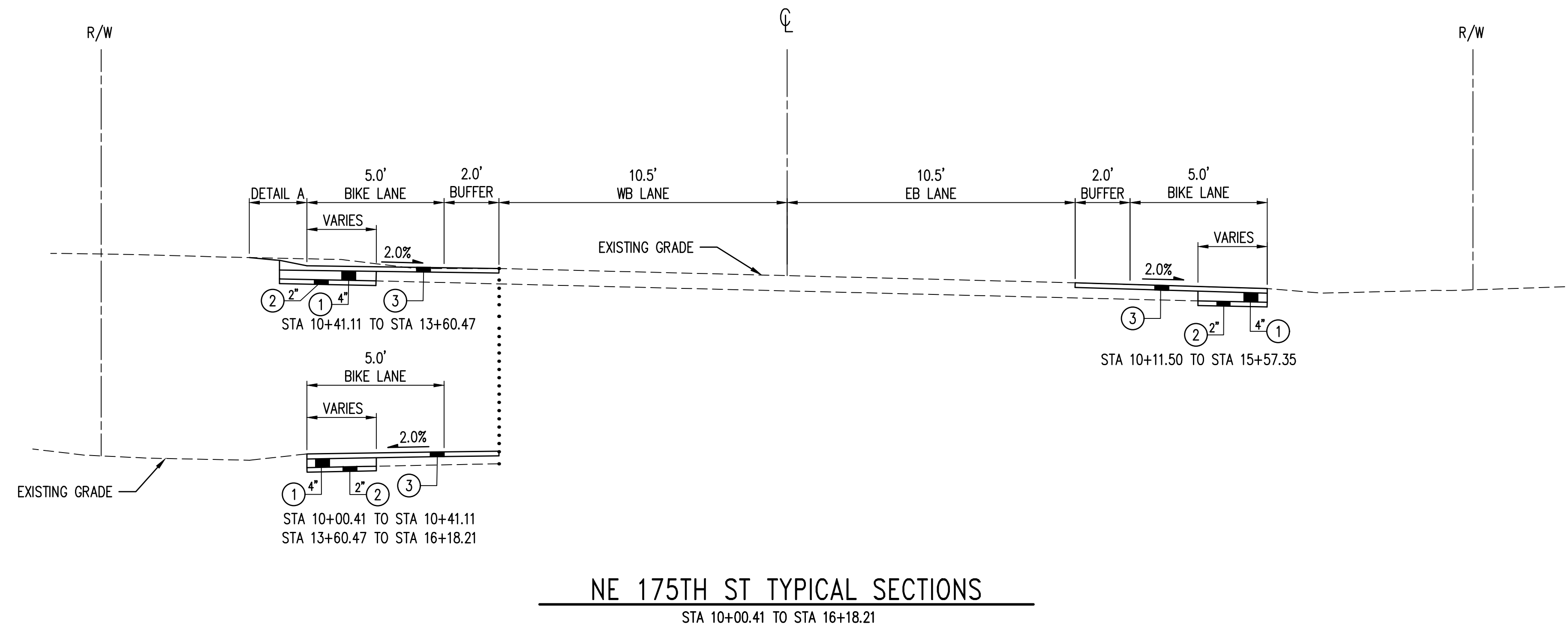
**ABBREVIATIONS,
LEGEND, & SURVEY NOTES**

SHEET 2 OF 12

CV02

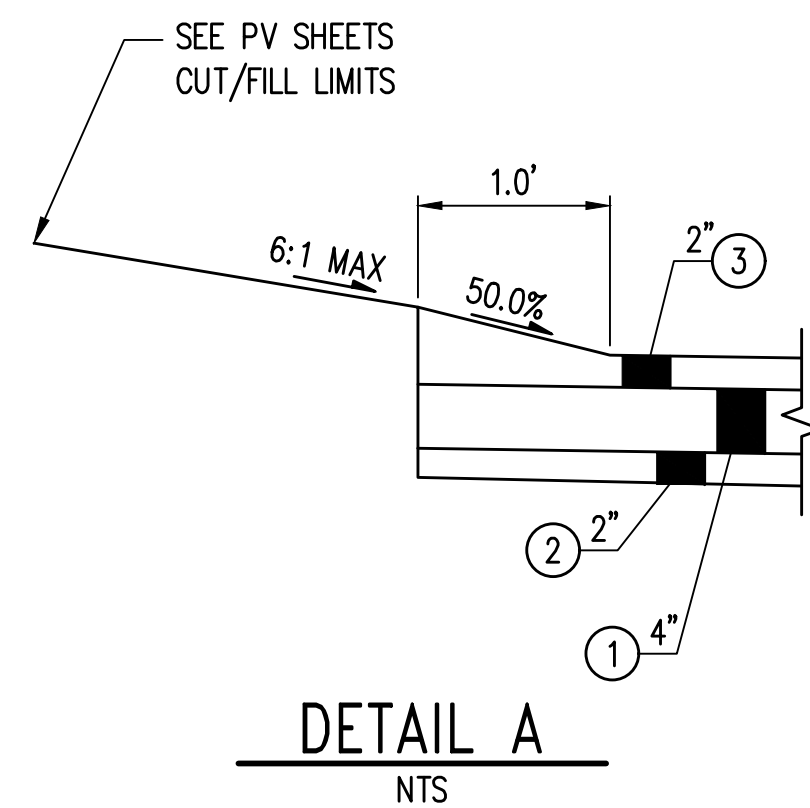
SCALE: N/A

Name: MICHAELV Date: Apr 21, 2023-01:58:20pm File: \\kpf.com\Civil\2000001-2009999\200107 Kenmore Trans On-Call (No. 19-C2098)\Task Order 14 - 175th Wayfinding\CADD\Sheets\KM175-TS.dwg



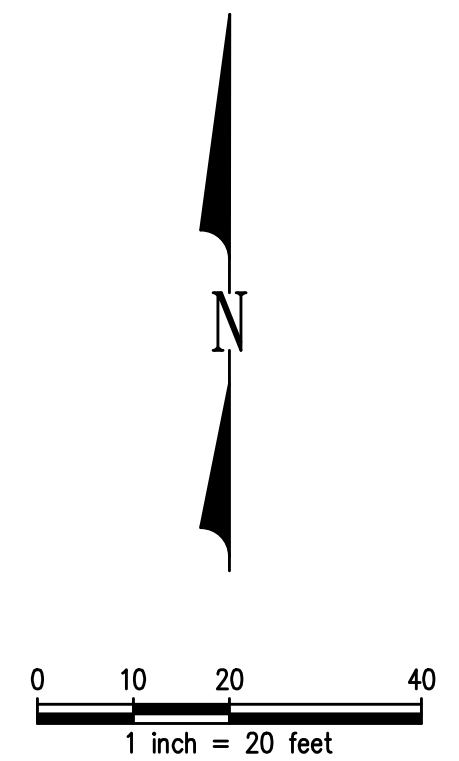
CONSTRUCTION NOTES:

- ① HMA CL. 3/8", PG 64-22
- ② CRUSHED SURFACING TOP COURSE
- ③ 2" BITUMINOUS PLANING, 2" HMA CL. 3/8", PG 64-22 OVERLAY



NE 175TH ST TYPICAL SECTIONS
STA 10+00.41 TO STA 16+18.21

BID SET



Know what's below.
Call before you dig.

No	Date	Revision	By	Appr

CITY OF KENMORE
Public Works Engineering
18120 68th Ave NE
Kenmore, WA 98028
425-398-8900

DRAWN BY: MRV
CHECKED BY: NDA
DATE: 04/25/2023
DESIGNED BY: CJO
APPROVED BY: RJL
J O B No. : 2000107



kpff
1601 5th Avenue, Suite 1600
Seattle, WA 98101
206.622.5822
www.kpff.com

**175TH WAYFINDING
CHANNELIZATION IMPROVEMENT**

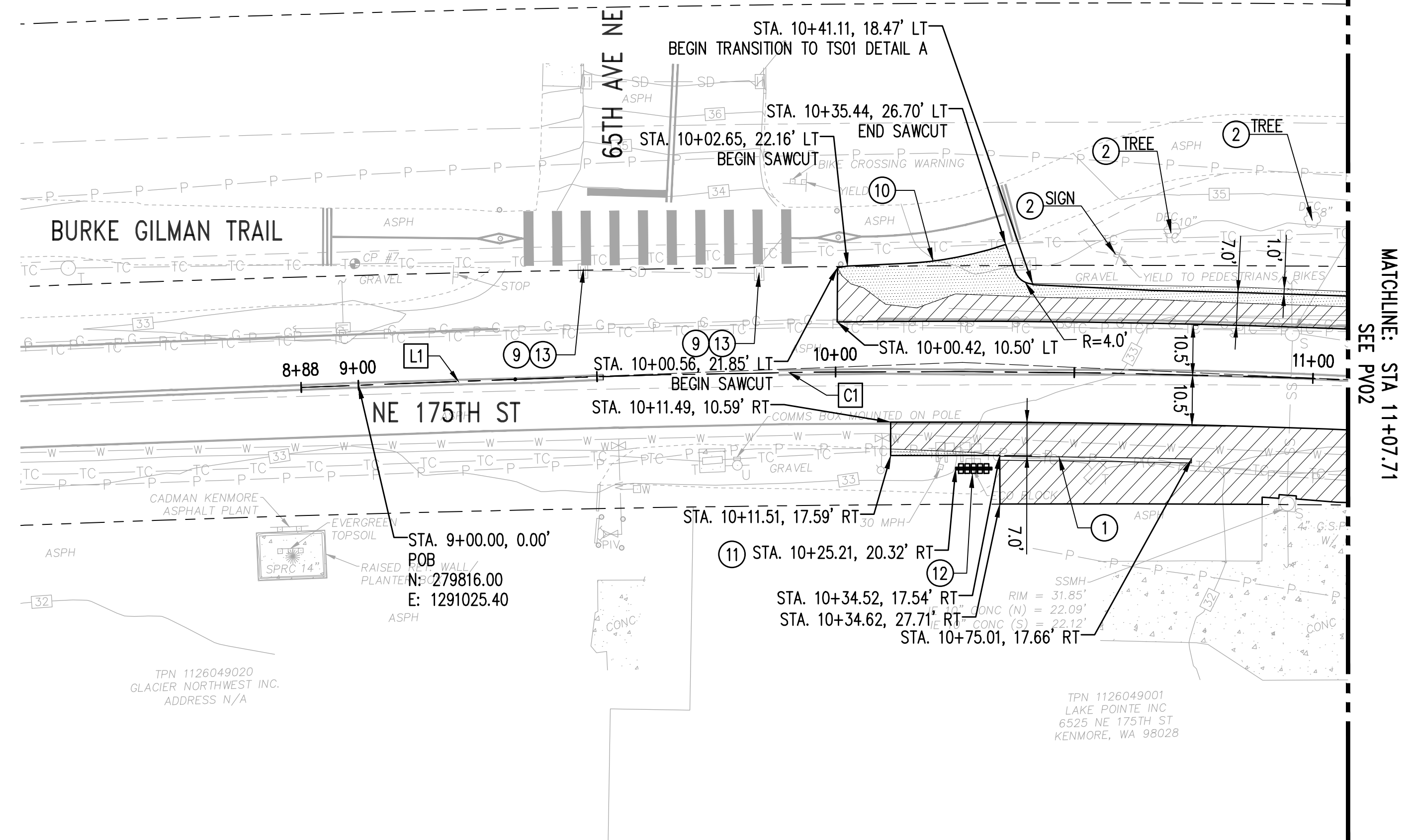
TYPICAL SECTIONS

SHEET 3 OF 12

TS01

SCALE: 1"=20'

ALIGNMENT DATA								
CURVE/LINE NO.	DESCRIPTION	STATION	NORTHING	EASTING	BEARING	▲	RADIUS (FT)	LENGTH (FT)
L1	POB	9+00.00	279816.00	1291025.40	N89°33'50.14" E			
C1	PC	9+32.87	279816.25	1291058.26	-	4.72°	2275.00'	187.33'
	PI	10+26.61	279816.96	1291152.01	-			
	PCC	11+20.25	279809.96	1291245.49	-			
C2	PC	11+20.25	279809.96	1291245.49	-	37.61°	330.00'	212.76'
	PI	12+32.63	279801.57	1291357.55	-			
	PT	13+36.88	279726.53	1291441.21	-			
L2	-	-	-	-	S48°06'17.69" E			
C3	PC	14+71.45	279636.66	1291541.38	-	40.16°	290.00'	199.13'
	PI	15+77.46	279565.87	1291620.29	-			
	PT	16+74.72	279562.66	1291726.24	-			
L3	-	-	-	-	S88°15'49.39" E			
L4	PI	17+66.10	279559.89	1291817.59	-	-	-	-
	POE	19+28.00	279550.95	1291979.24	S86°49'53.38" E			



LEGEND:

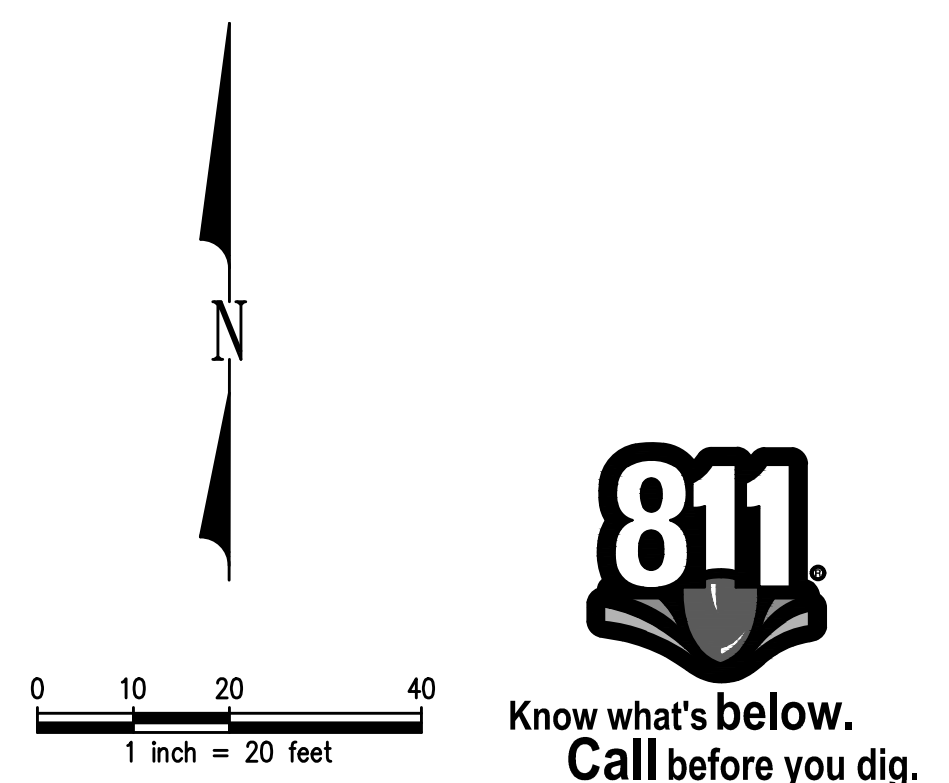
- RIGHT OF WAY
- ROADWAY CENTERLINE
- F- FILL LINE
- C- CUT LINE
- SD- 12" STORM DRAIN
- [Hatched Box] 6" HMA CL. 3/8" PG-64-22 ON 2" CSTC
- [Diagonal Hatched Box] 2" PLANING BITUMINOUS PAVEMENT, 2" HMA CL. 3/8" PG 64-22 OVERLAY

GENERAL NOTES:

1. REFER TO CHANNELIZATION PLANS FOR SIGN LOCATIONS

CONSTRUCTION NOTES:

- ① CEMENT CONCRETE EXTRUDED CURB PER KSD FIGURE 8-009
- ② PRESERVE AND PROTECT FEATURE AS NOTED
- ③ ADJUST WATER VALVE TO GRADE (BY NUD)
- ④ ADJUST RIM TO GRADE (BY MCI VERIZON)
- ⑤ CONNECTION TO EXISTING STORM SEWER
- ⑥ REMOVE RECTANGULAR FRAME GRATE AND RETURN TO CITY YARD, FURNISH AND INSTALL DIAGONAL SLOTTED GRATE PER KSD FIGURE 7-008
- ⑦ CATCH BASIN TYPE 1 PER KSD STD FIGURE 7-003
- ⑧ INSTALL 12" HDPE STORM PIPE
- ⑨ STORM DRAIN INLET PROTECTION PER WSDOT STD PLAN I-40.20-00
- ⑩ SAWCUTTING
- ⑪ CONSTRUCT MAILBOX CLUSTER PER KSD STD FIGURE 6-005
- ⑫ REMOVE ECO BLOCKS AND RELOCATE PER ENGINEER
- ⑬ REMOVE RECTANGULAR FRAME GRATE AND RETURN TO CITY YARD, FURNISH AND INSTALL ADA GRATE FOR RECTANGULAR FRAME PER WSDOT STD PLAN B-30.15-00



Name: MICHAELV Date: Apr 21, 2023-01:58:40pm File: \\kpf.com\Civil\2000001-2009999\200107 Kenmore Trans On-Call (No. 19-C2098)\Task Order 14 - 175th Wayfinding\CADD\Sheets\KM175-PV.dwg

No	Date	Revision	By	Appr

CITY OF KENMORE
 Public Works Engineering
 18120 68th Ave NE
 Kenmore, WA 98028
 425-398-8900

DRAWN BY
MRV
 CHECKED BY
NDA
 DATE: 04/25/2023
 J O B No. : 2000107

DESIGNED BY
CJO
 APPROVED BY
RJL



kpff
 1601 5th Avenue, Suite 1600
 Seattle, WA 98101
 206.622.5822
 www.kpff.com

**175TH WAYFINDING
 CHANNELIZATION IMPROVEMENT**

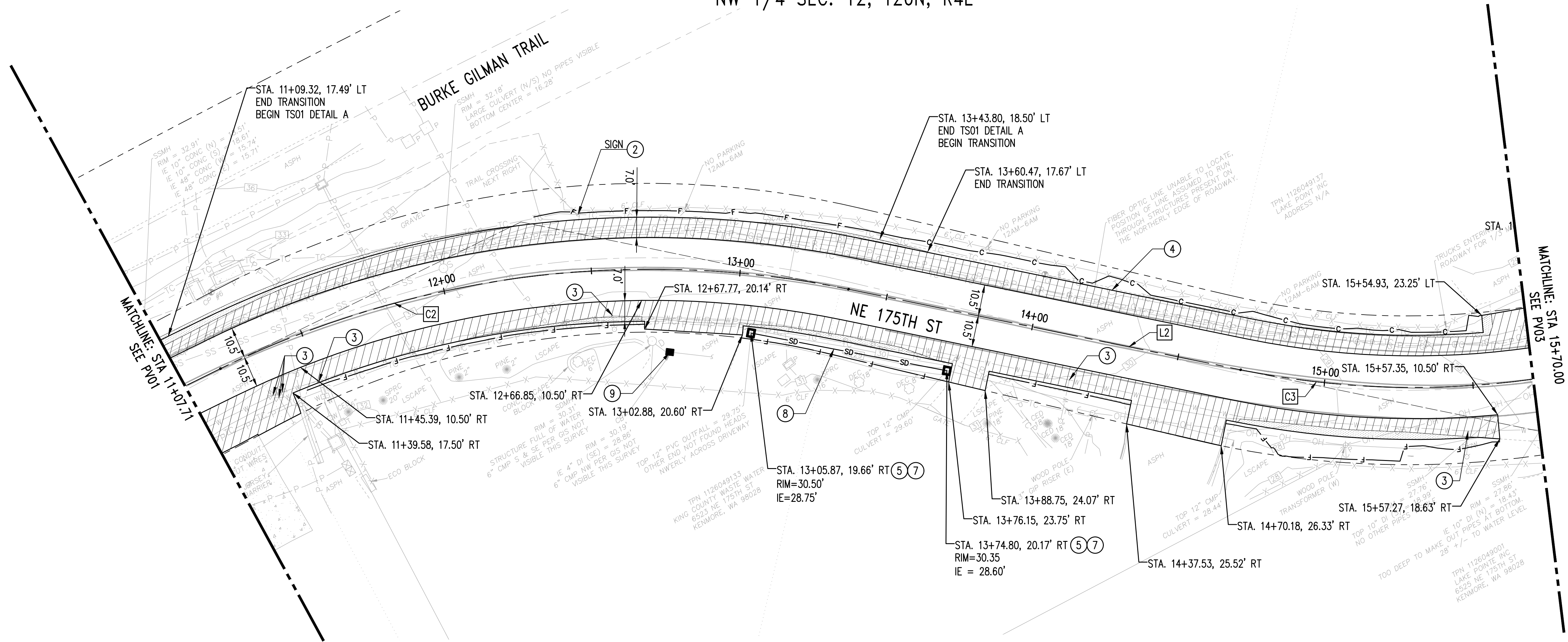
PAVING PLAN

SHEET 4 OF 12

PV01

SCALE: 1"=20'

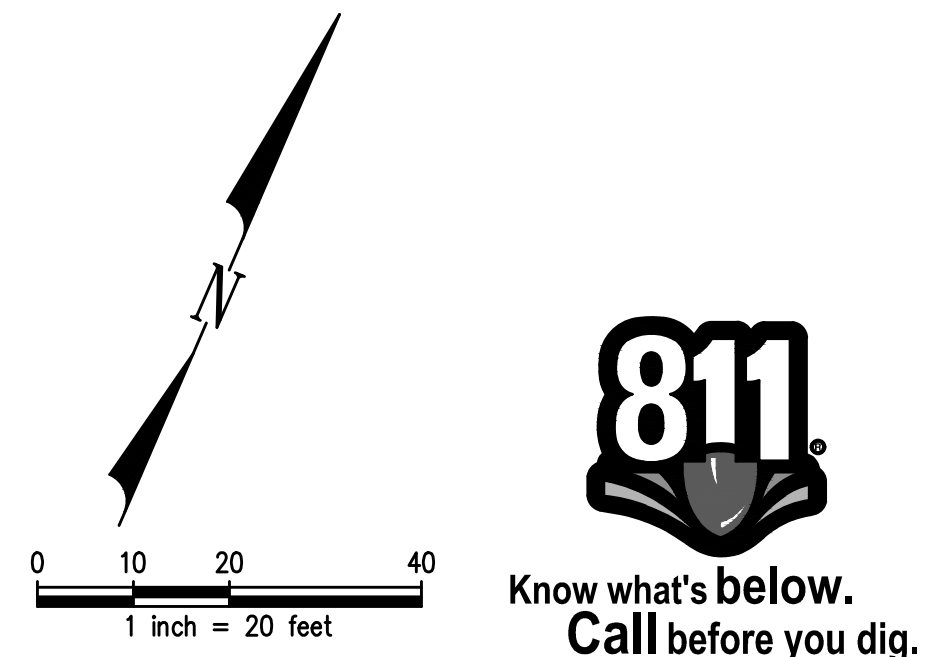
BID SET



- LEGEND:**
- RIGHT OF WAY
 - - - ROADWAY CENTERLINE
 - F FILL LINE
 - C CUT LINE
 - sd 12" STORM DRAIN
 - [Hatched Box] 6" HMA CL. 3/8" PG-64-22 ON 2" CSTC
 - [Diagonal Hatched Box] 2" PLANING BITUMINOUS PAVEMENT, 2" HMA CL. 3/8" PG 64-22 OVERLAY

- GENERAL NOTES:**
1. REFER TO CHANNELIZATION PLANS FOR SIGN LOCATIONS

- CONSTRUCTION NOTES:**
- ① CEMENT CONCRETE EXTRUDED CURB PER KSD FIGURE 8-009
 - ② PRESERVE AND PROTECT FEATURE AS NOTED
 - ③ ADJUST WATER VALVE TO GRADE (BY NUD)
 - ④ ADJUST RIM TO GRADE (BY MCI VERIZON)
 - ⑤ CONNECTION TO EXISTING STORM SEWER
 - ⑥ REMOVE RECTANGULAR FRAME GRATE AND RETURN TO CITY YARD, FURNISH AND INSTALL DIAGONAL SLOTTED GRATE PER KSD FIGURE 7-008
 - ⑦ CATCH BASIN TYPE 1 PER KSD STD FIGURE 7-003
 - ⑧ INSTALL 12" HDPE STORM PIPE
 - ⑨ STORM DRAIN INLET PROTECTION PER WSDOT STD PLAN I-40.20-00
 - ⑩ SAWCUTTING
 - ⑪ CONSTRUCT MAILBOX CLUSTER PER KSD STD FIGURE 6-005
 - ⑫ REMOVE ECO BLOCKS AND RELOCATE PER ENGINEER

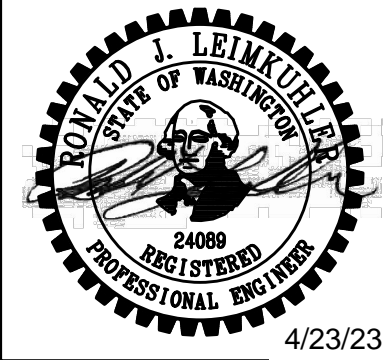


Name: MICHAELV Date: Apr 21, 2023-01:58:41pm File: \\kpf.com\Civil\2000001-2009999\2000107 Kenmore Trans On-Call (No. 19-C2098)\Task Order 14 - 175th Wayfinding\CADD\Sheets\KM175-PV.dwg

No	Date	Revision	By	Appr

CITY OF KENMORE
Public Works Engineering
18120 68th Ave NE
Kenmore, WA 98028
425-398-8900

DRAWN BY
MRV
CHECKED BY
NDA
DATE: 04/25/2023
JOB No. : 2000107



kpf
1601 5th Avenue, Suite 1600
Seattle, WA 98101
206.622.5822
www.kpff.com

**175TH WAYFINDING
CHANNELIZATION IMPROVEMENT**

PAVING PLAN

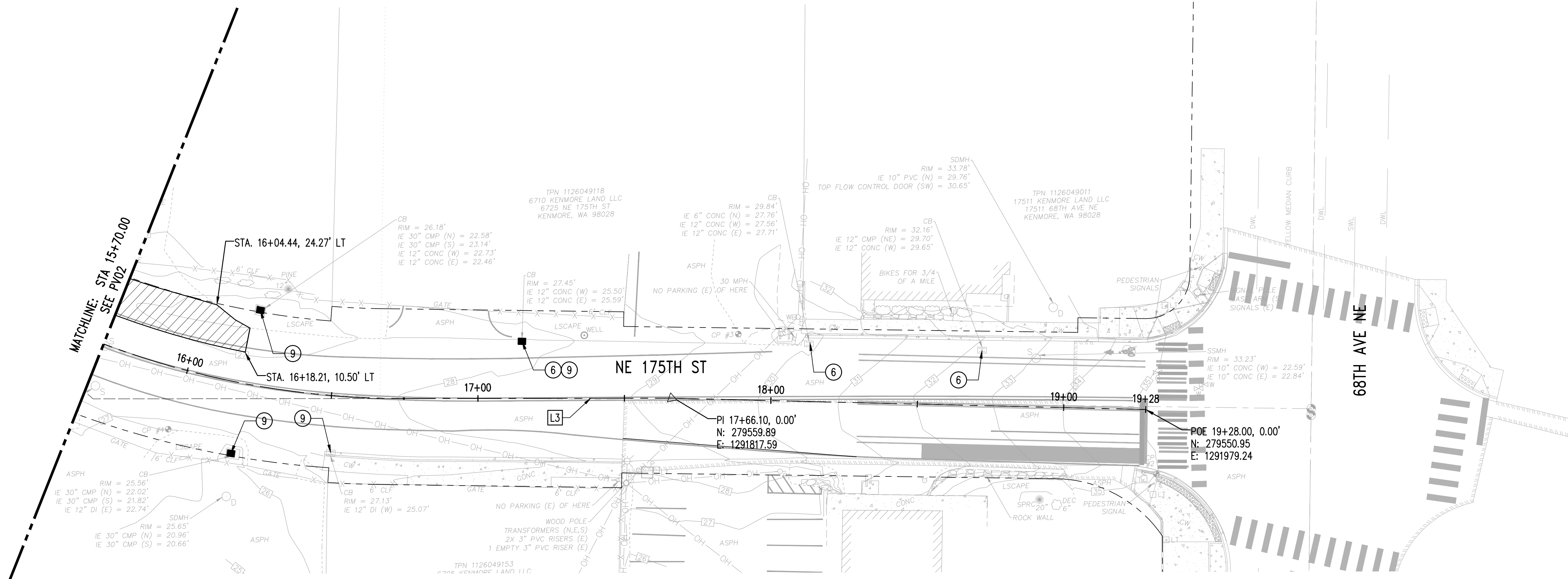
SHEET 5 OF 12

PV02

SCALE: 1"=20'

BID SET

Name: MICHAEL Date: Apr 21, 2023-01:58:42pm File: \\pff.com\Civil\2000001-2009999\200107 Kenmore Trans On-Call (No. 19-C2098)\Task Order 14 - 175th Wayfinding\CADD\Sheets\KM175-PV.dwg



BID SET

LEGEND:

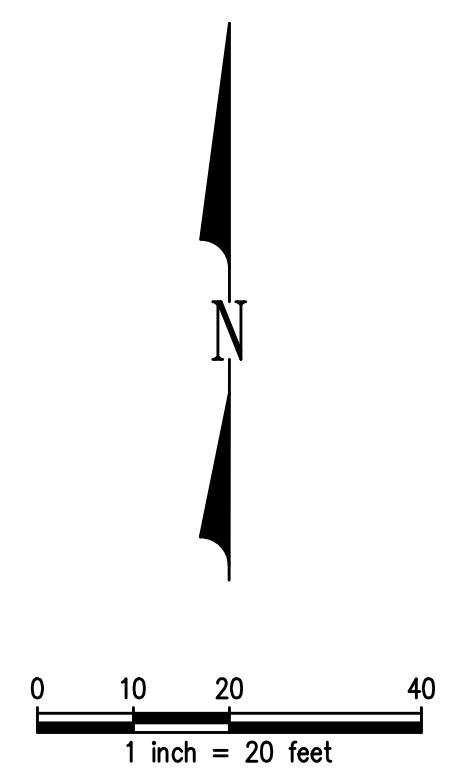
- RIGHT OF WAY
- ROADWAY CENTERLINE
- F- FILL LINE
- C- CUT LINE
- SD- 12" STORM DRAIN
- [Hatched Box] 6" HMA CL. 3/8" PG-64-22 ON 2" CSTC
- [Diagonal Hatched Box] 2" PLANING BITUMINOUS PAVEMENT, 2" HMA CL. 3/8" PG 64-22 OVERLAY

GENERAL NOTES:

1. REFER TO CHANNELIZATION PLANS FOR SIGN LOCATIONS

CONSTRUCTION NOTES:

- ① CEMENT CONCRETE EXTRUDED CURB PER KSD FIGURE 8-009
- ② PRESERVE AND PROTECT FEATURE AS NOTED
- ③ ADJUST WATER VALVE TO GRADE (BY NUD)
- ④ ADJUST RIM TO GRADE (BY MCI VERIZON)
- ⑤ CONNECTION TO EXISTING STORM SEWER
- ⑥ REMOVE RECTANGULAR FRAME GRATE AND RETURN TO CITY YARD, FURNISH AND INSTALL DIAGONAL SLOTTED GRATE PER KSD FIGURE 7-008
- ⑦ CATCH BASIN TYPE 1 PER KSD STD FIGURE 7-003
- ⑧ INSTALL 12" HDPE STORM PIPE
- ⑨ STORM DRAIN INLET PROTECTION PER WSDOT STD PLAN I-40.20-00
- ⑩ SAWCUTTING
- ⑪ CONSTRUCT MAILBOX CLUSTER PER KSD STD FIGURE 6-005
- ⑫ REMOVE ECO BLOCKS AND RELOCATE PER ENGINEER

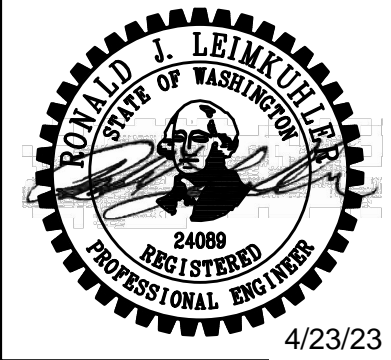


No	Date	Revision	By	Appr

CITY OF KENMORE
Public Works Engineering
18120 68th Ave NE
Kenmore, WA 98028
425-398-8900

DRAWN BY
MRV
CHECKED BY
NDA
DATE: 04/25/2023
J O B No. : 2000107

DESIGNED BY
CJO
APPROVED BY
RJL



kpff
1601 5th Avenue, Suite 1600
Seattle, WA 98101
206.622.5822
www.kpff.com

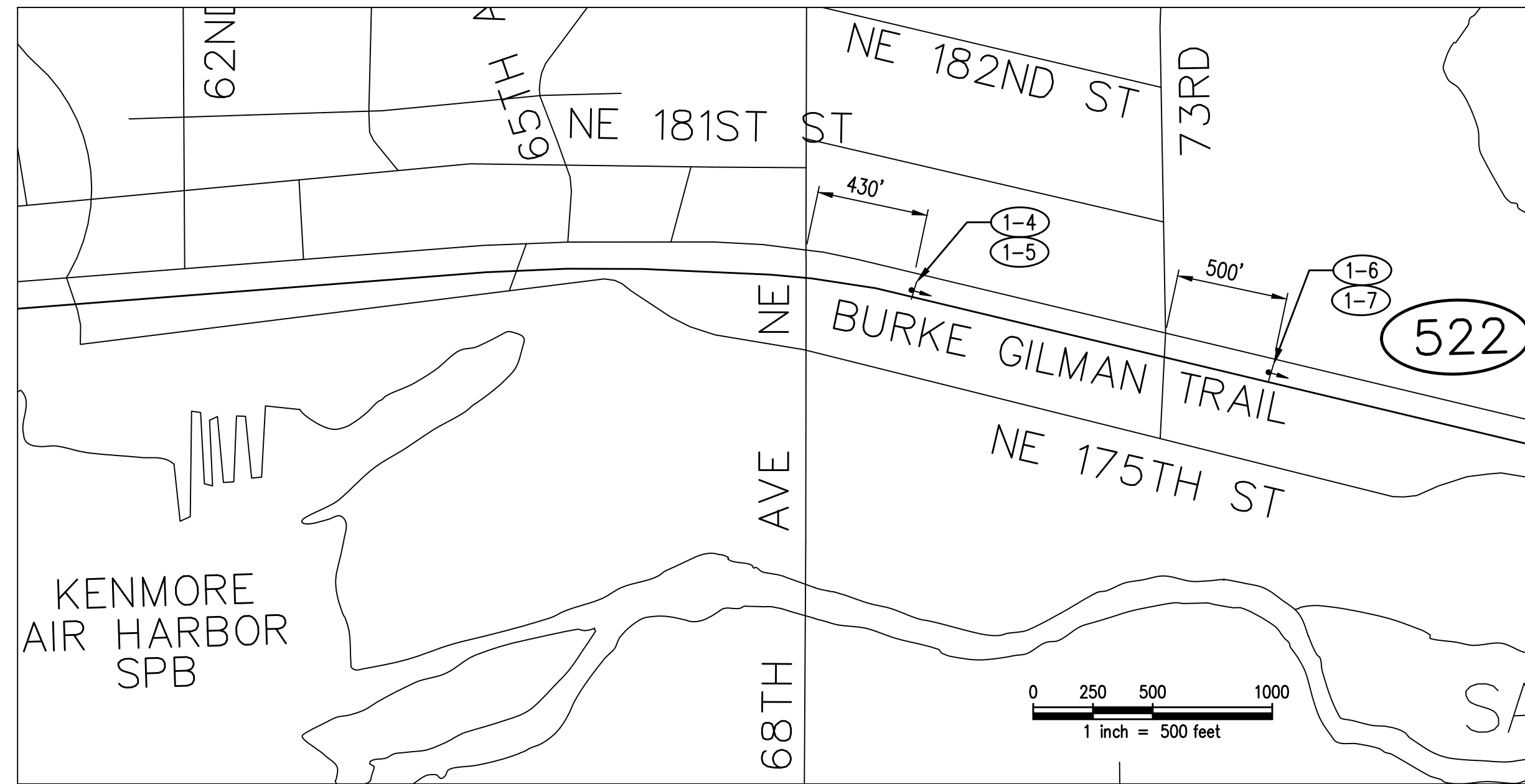
**175TH WAYFINDING
CHANNELIZATION IMPROVEMENT**

PAVING PLAN

SHEET 6 OF 12

PV03

SCALE: 1"=20'



DETAIL 2
SIGN SCHEDULE

SCALE: 1" = 500'

SIGN NO.	SIGN CODE	DESCRIPTION	STA. LOC.	SIZE/REMARKS
(1-1)	(NOT USED)	--	--	--
(1-2)	SPECIAL	LAKE WASHINGTON LOOP BIKE ROUTE RT	09+32.91, 20.26' LT	12 X 180, SEE NOTE 4
(1-3b)	SPECIAL	LAKE WASHINGTON LOOP BIKE ROUTE LT	10+38.26, 25.37' LT	12 X 18, FACING SOUTH, SEE NOTE 4
(1-4)	SPECIAL	LAKE WASHINGTON LOOP BIKE ROUTE ST	SEE DETAIL 2	12 X 18, SEE NOTE 4
(1-5)	W16-2a	"1/4 MILE" GREEN TEXT ON WHITE	SEE DETAIL 2	12 X 9
(1-6)	SPECIAL	LAKE WASHINGTON LOOP BIKE ROUTE ST	SEE DETAIL 2	12 X 18, SEE NOTE 4
(1-7)	W16-2a	"1/2 MILE", GREEN TEXT ON WHITE	SEE DETAIL 2	12 X 9
(1-8)	R5-1b	BIKE WRONG WAY	10+38.26, 25.37' LT	12 X 18, FACING NORTH
(1-9)	R1-2	YIELD	10+38.26, 25.40' LT	18 X 18 X 18, FACING SOUTH
(1-10)	SPECIAL	LAKE WASHINGTON LOOP BIKE ROUTE LT	10+16.15, 36.70' LT	12 X 18, SEE NOTE 4
(R1-1)	R2-1	REMOVE SPEED LIMIT 30 MPH	N/A	30 X 36

LEGEND:

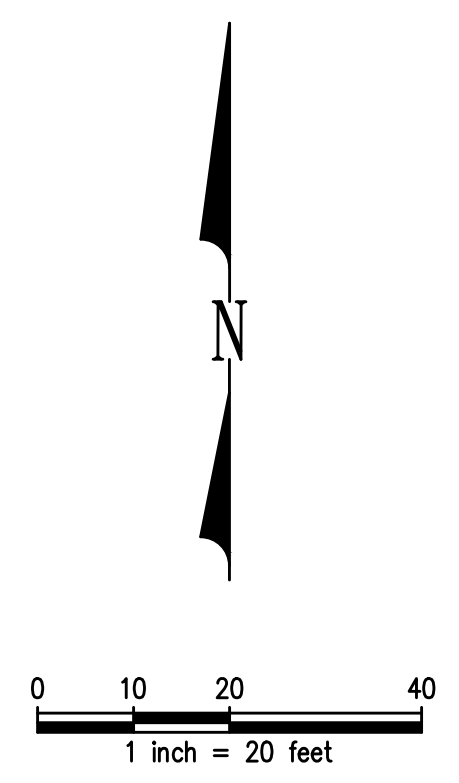
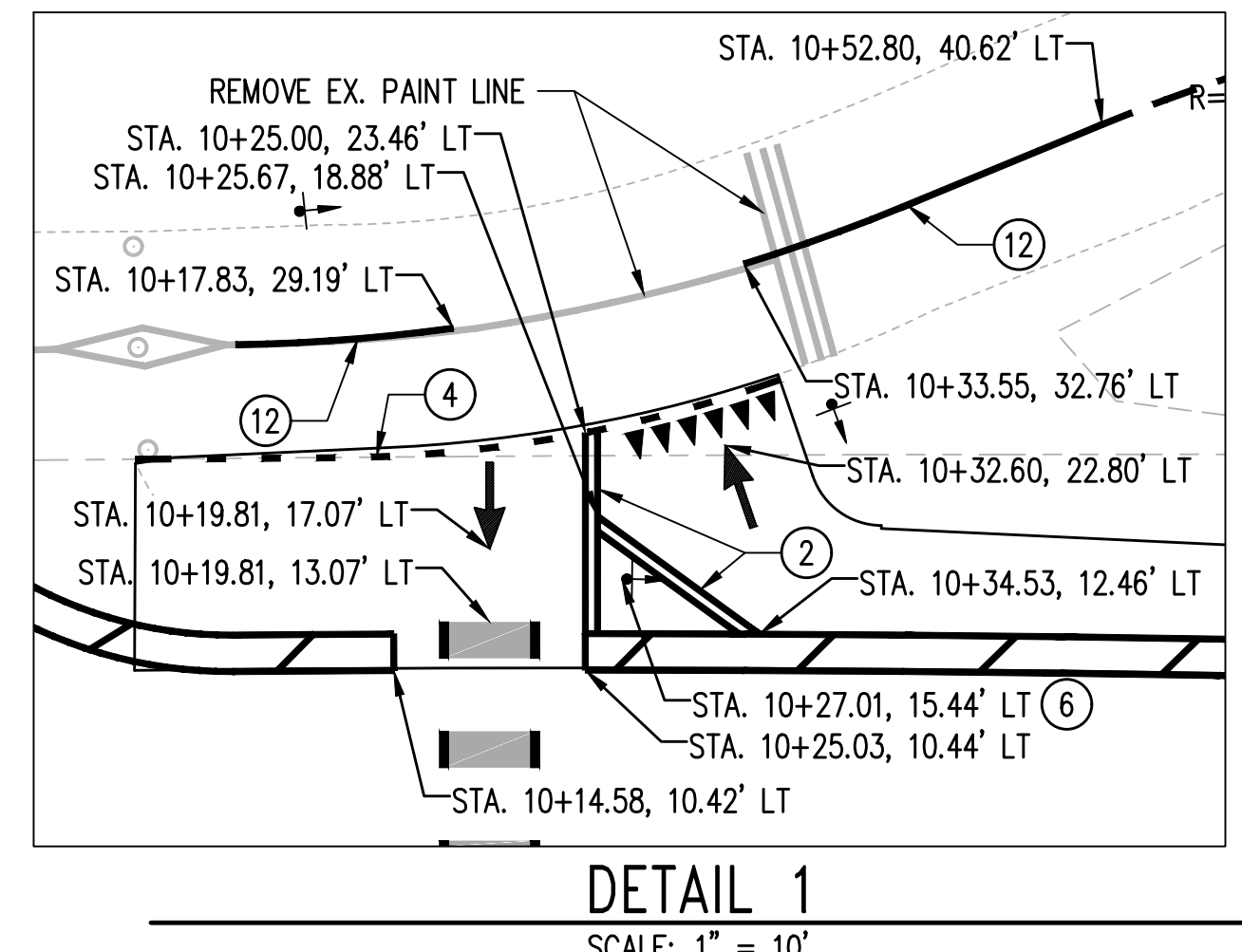
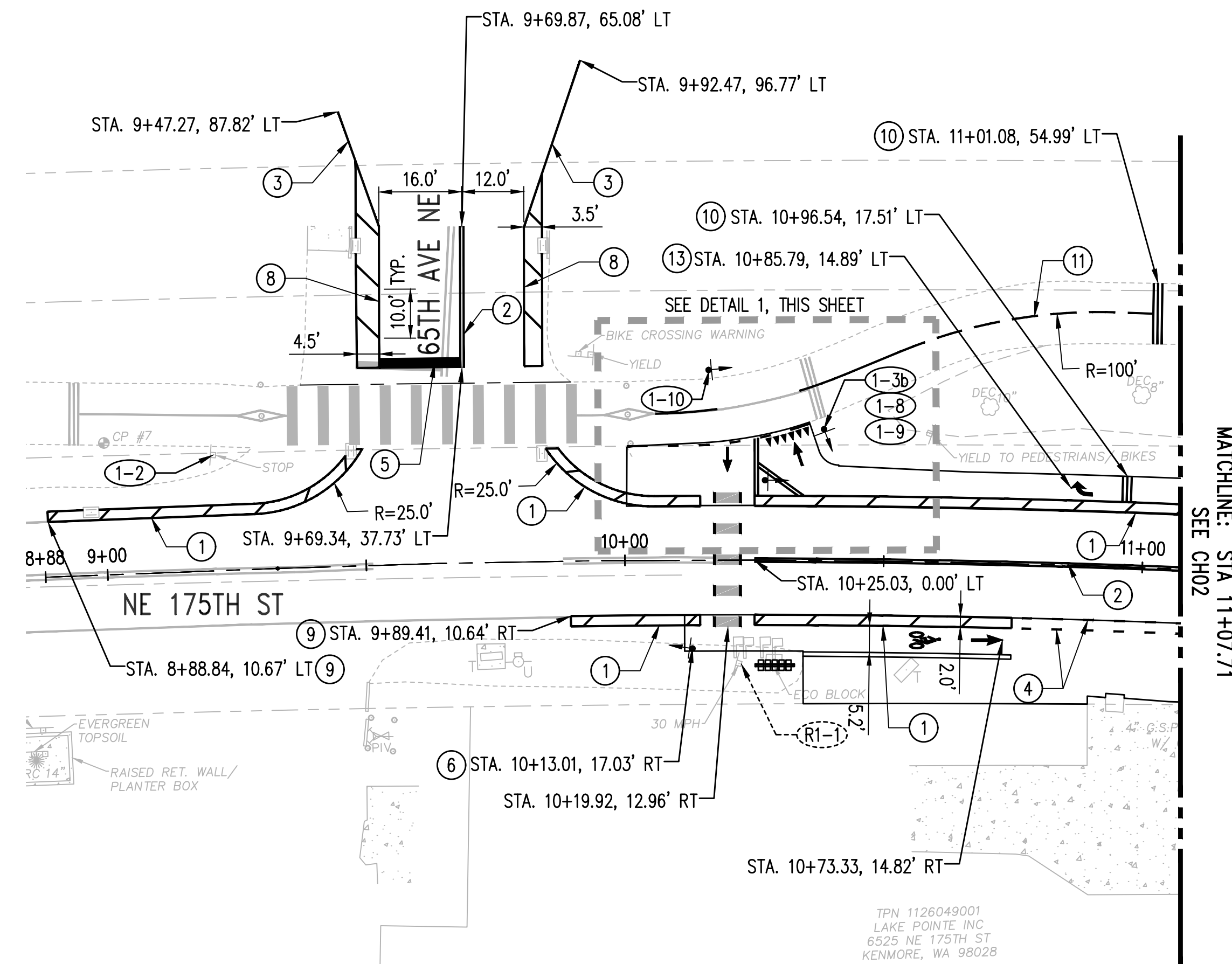
- RIGHT OF WAY
- GREEN MMA BIKE CROSSING, PER KSD FIGURE 4-004
- PERMANENT SIGN PER KSD FIGURE 6-002 AND 6-003
- PLASTIC BICYCLE SYMBOL PER WSDOT STD PLAN M-9.50-02
- PLASTIC ARROW PER WSDOT STD PLAN M-9.50-02, BIKE LANE ARROW DETAIL
- TYPE 1 PLASTIC YIELD LINE SYMBOL PER WSDOT STD PLAN M-24.60-04, SYMBOL MARKINGS MISCELLANEOUS

GENERAL NOTES:

1. ALL SIGNS TO BE MOUNTED ON BREAKAWAY BASE PER KSD FIGURE 6-002 SURFACE MOUNT DETAIL, UNLESS OTHERWISE NOTED.
2. CONTRACTOR TO CONFIRM SIGN 1-4 and 1-6 LOCATIONS WITH ENGINEER.
3. REMOVE EXISTING PAVEMENT MARKINGS PRIOR PLACEMENT OF NEW MARKINGS.
4. SEE SHEET MSD01 FOR LAKE WASHINGTON LOOP SIGNS DETAIL

CONSTRUCTION NOTES:

- ① PLASTIC BIKE LANE BUFFER AND RPM'S PER KSD FIGURE 4-004
- ② 4" DOUBLE YELLOW PAINT LINE AND RPM'S PER KSD FIGURE 4-002
- ③ 4" WHITE PLASTIC SOLID LANE LINE PER WSDOT STD PLAN M-20.10-03
- ④ 4" WHITE PLASTIC DOTTED EXTENSION LINE PER WSDOT STD PLANS M-20.20-02 AND M-20.10-04
- ⑤ PLASTIC STOP LINE PER KSD STD FIGURE 4-001
- ⑥ RAPID FLASHING BEACON AND SIGNAGE, SEE SHEET MSD01 DETAIL 1
- ⑦ INSTALL SIGN ON EXISTING SIGNAL POLE PER WSDOT STD PLAN G-30.10-04
- ⑧ 4" WHITE PLASTIC EDGE LINE, WITH WHITE TYPE 1 RPM'S, 5.0' O.C.
- ⑨ MATCH EXISTING STRIPING
- ⑩ MMA WARNING BAND, SEE SHEET MSD01 DETAIL 3
- ⑪ 4" WIDE BROKEN YELLOW PAINTED LINE PER WSDOT STD PLAN M-9.60-00
- ⑫ 4" WIDE SOLID YELLOW PAINTED LINE PER WSDOT STD PLAN M-9.60-00
- ⑬ TYPE 2SR (RIGHT) LOW SPEED TRAFFIC ARROW PER WSDOT STD PLAN M-24.40-02

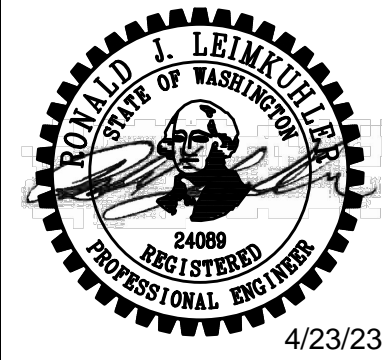


Name: \Anderson Date: Apr 23, 2023 11:43:28am File: C:\Temp\AcPublish\12348\KM175-CH1.dwg

No	Date	Revision	By	Appr

CITY OF KENMORE
Public Works Engineering
18120 68th Ave NE
Kenmore, WA 98028
425-398-8900

DRAWN BY MRV
CHECKED BY NDA
DATE: 04/25/2023
JOB No.: 2000107



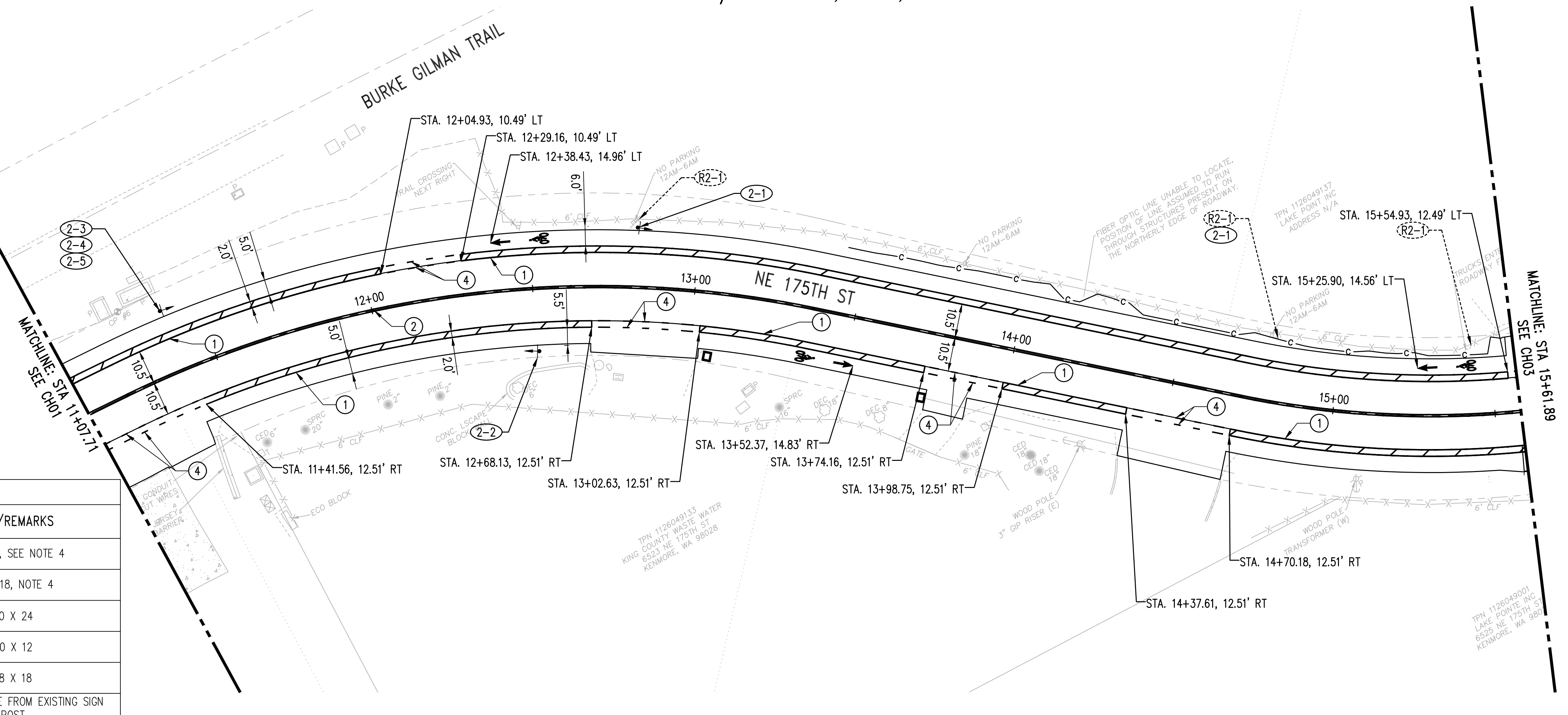
kpff
1601 5th Avenue, Suite 1600
Seattle, WA 98101
206.622.5822
www.kpff.com

175TH WAYFINDING CHANNELIZATION IMPROVEMENT
CHANNELIZATION PLAN

SHEET 7 OF 12
CH01
SCALE: 1"=20'

MATCHLINE: STA 11+07.71
SEE CH02

BID SET



SIGN SCHEDULE

SIGN NO.	SIGN CODE	DESCRIPTION	STA LOC.	SIZE/REMARKS
(2-1)	SPECIAL	LAKE WASHINGTON LOOP BIKE ROUTE ST	12+81.95, 18.4' LT	12 X 18, SEE NOTE 4
(2-2)	SPECIAL	LAKE WASHINGTON LOOP BIKE ROUTE ST	12+50.93, 19.5' RT	12 X 18, NOTE 4
(2-3)	R3-17	BIKE LANE	10+74.49, 19.50' LT	30 X 24
(2-4)	R3-17b	ENDS	10+74.49, 19.50' LT	30 X 12
(2-5)	W1-1R	TURN ARROW WARNING RT	10+74.49, 19.50' LT	18 X 18
(R2-1)	R7-2	NO PARKING	N/A	12 X 18 REMOVE FROM EXISTING SIGN POST

GENERAL NOTES:

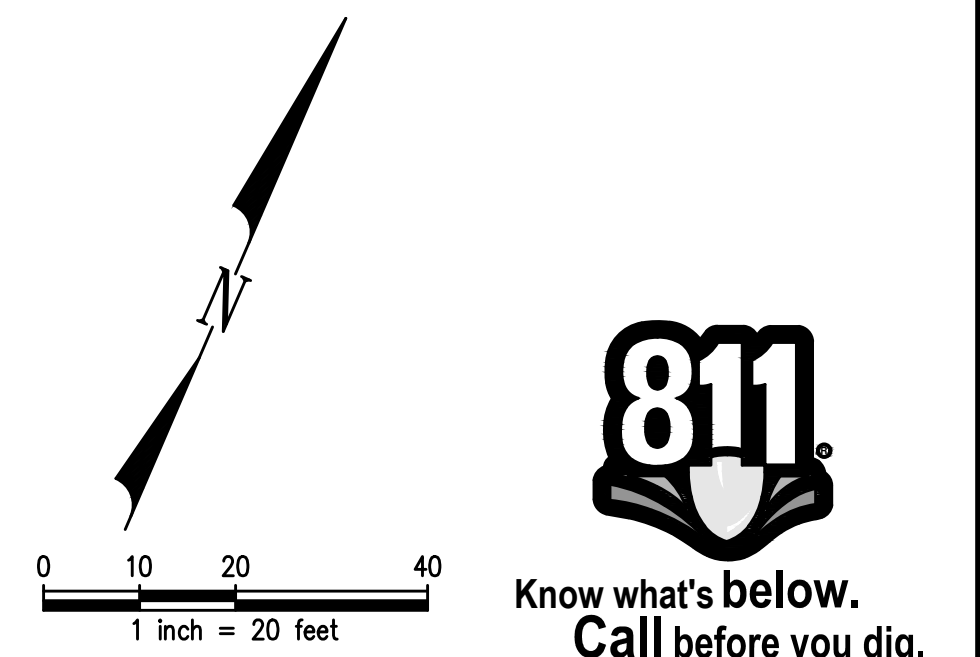
- ALL SIGNS TO BE MOUNTED ON BREAKAWAY BASE PER KSD FIGURE 6-002 SURFACE MOUNT DETAIL, UNLESS OTHERWISE NOTED.
- CONTRACTOR TO CONFIRM SIGN 1-4a and 1-4b LOCATIONS WITH ENGINEER.
- REMOVE EXISTING PAVEMENT MARKINGS PRIOR PLACEMENT OF NEW MARKINGS.
- SEE SHEET MSD01 FOR LAKE WASHINGTON LOOP SIGNS DETAIL

CONSTRUCTION NOTES:

- PLASTIC BIKE LANE BUFFER AND RPM'S PER KSD FIGURE 4-004
- 4" DOUBLE YELLOW PAINT LINE AND RPM'S PER KSD FIGURE 4-002
- 4" WHITE PLASTIC SOLID LANE LINE PER WSDOT STD PLAN M-20.10-03
- 4" WHITE PLASTIC DOTTED EXTENSION LINE PER WSDOT STD PLANS M-20.20-02 AND M-20.10-04
- PLASTIC STOP LINE PER KSD STD FIGURE 4-001
- RAPID FLASHING BEACON AND SIGNAGE, SEE SHEET MSD01 DETAIL 1
- INSTALL SIGN ON EXISTING SIGNAL POLE PER WSDOT STD PLAN G-30.10-04
- 4" WHITE PLASTIC EDGE LINE, WITH WHITE TYPE 1 RPMS, 5.0' O.C.
- MATCH EXISTING STRIPING
- MMA WARNING BAND PER DETAIL 3
- 4" WIDE BROKEN YELLOW PAINTED LINE PER WSDOT STD PLAN M-9.60-00
- 4" WIDE SOLID YELLOW PAINTED LINE PER WSDOT STD PLAN M-9.60-00
- TYPE 2SR (RIGHT) LOW SPEED TRAFFIC ARROW PER WSDOT STD PLAN M-24.40-02

LEGEND:

- RIGHT OF WAY
- GREEN MMA BIKE CROSSING, PER KSD FIGURE 4-004
- PERMANENT SIGN PER KSD FIGURE 6-002 AND 6-003
- PLASTIC BICYCLE SYMBOL PER WSDOT STD PLAN M-9.50-02
- PLASTIC ARROW PER WSDOT STD PLAN M-9.50-02, BIKE LANE ARROW DETAIL
- TYPE 1 PLASTIC YIELD LINE SYMBOL PER WSDOT STD PLAN M-24.60-04, SYMBOL MARKINGS MISCELLANEOUS



Name: Wanderson Date: Apr 23, 2023 11:43:30am File: C:\Temp\AcPublish\12348\KM175-CH1.dwg

No	Date	Revision	By	Appr

CITY OF KENMORE
Public Works Engineering
18120 68th Ave NE
Kenmore, WA 98028
425-398-8900

DRAWN BY
MRV
CHECKED BY
NDA
DATE: 04/25/2023
JOB No. : 2000107

DESIGNED BY
CJO
APPROVED BY
RJL



kpff
1601 5th Avenue, Suite 1600
Seattle, WA 98101
206.622.5822
www.kpff.com

**175TH WAYFINDING
CHANNELIZATION IMPROVEMENT**

CHANNELIZATION PLAN

SHEET 8 OF 12

CH02

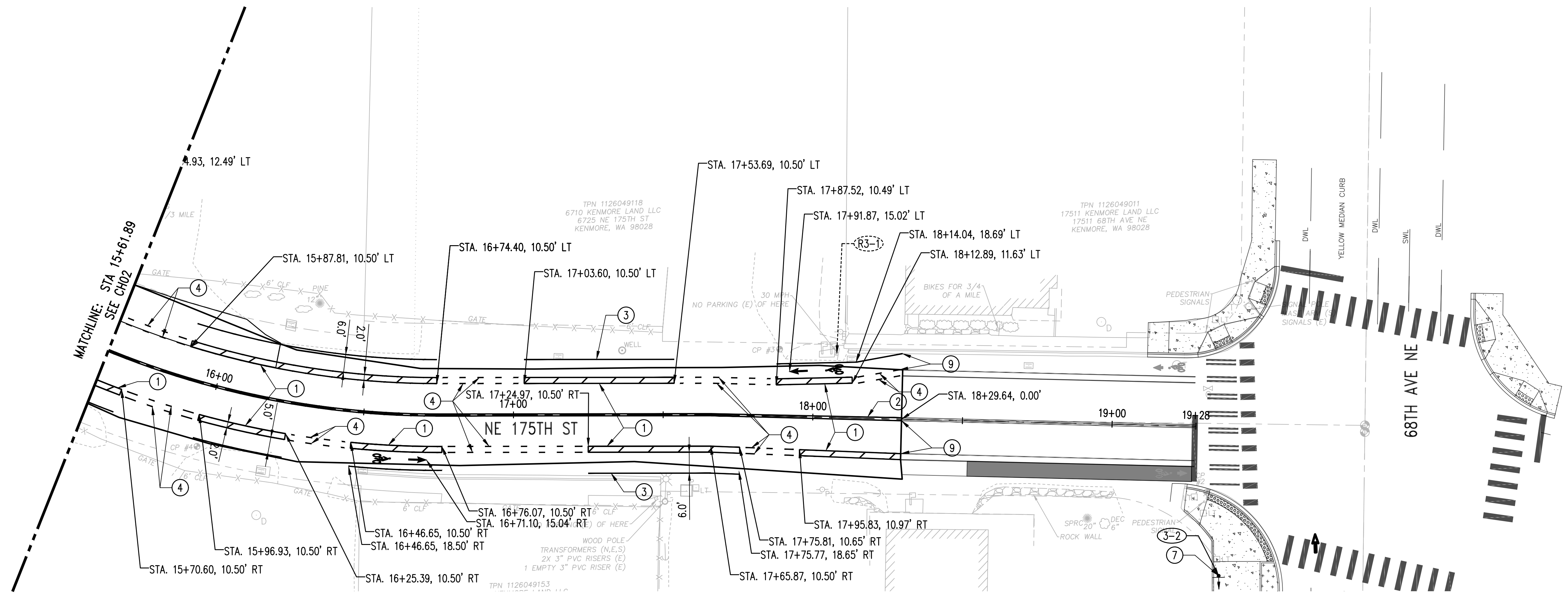
SCALE: 1"=20'

BID SET

MATCHLINE: STA 15+61.89
SEE CH03

MATCHLINE: STA 11+07.71
SEE CH01

Name: WAnderson Date: Apr 23, 2023 11:43:33am File: C:\Temp\AcPublish_12348\KM175-CH1.dwg



LEGEND:

- RIGHT OF WAY
- GREEN MMA BIKE CROSSING, PER KSD FIGURE 4-004
- PERMANENT SIGN PER KSD FIGURE 6-002 AND 6-003
- PLASTIC BICYCLE SYMBOL PER WSDOT STD PLAN M-9.50-02
- PLASTIC ARROW PER WSDOT STD PLAN M-9.50-02, BIKE LANE ARROW DETAIL
- TYPE 1 PLASTIC YIELD LINE SYMBOL PER WSDOT STD PLAN M-24.60-04, SYMBOL MARKINGS MISCELLANEOUS

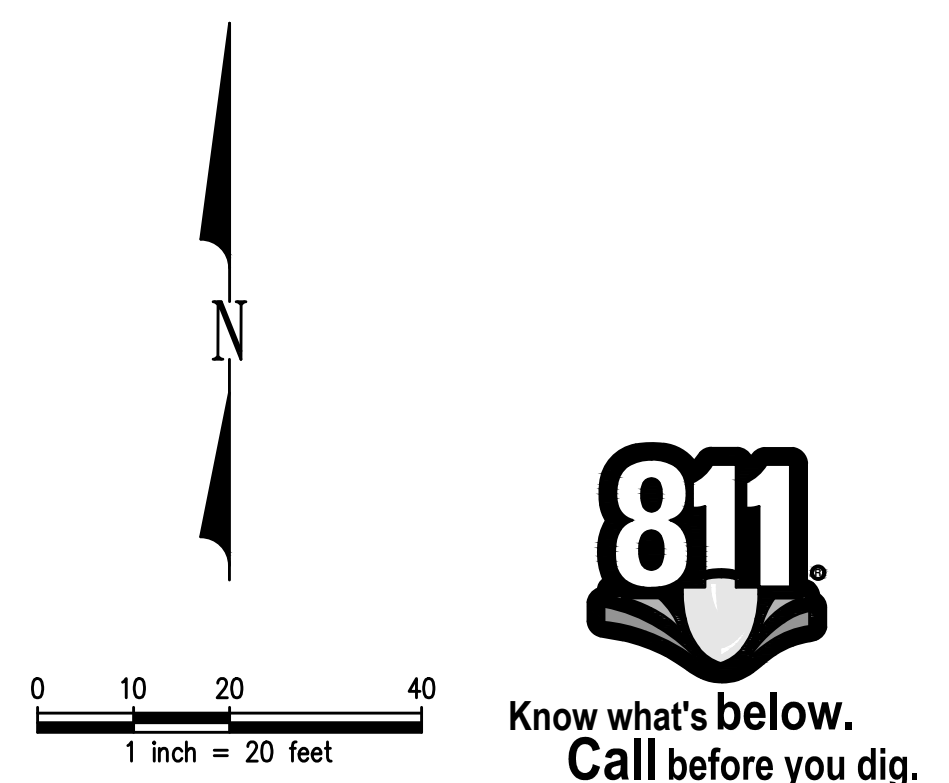
GENERAL NOTES:

1. ALL SIGNS TO BE MOUNTED ON BREAKAWAY BASE PER KSD FIGURE 6-002 SURFACE MOUNT DETAIL, UNLESS OTHERWISE NOTED.
2. CONTRACTOR TO CONFIRM SIGN 1-4a and 1-4b LOCATIONS WITH ENGINEER.
3. REMOVE EXISTING PAVEMENT MARKINGS PRIOR PLACEMENT OF NEW MARKINGS.
4. SEE SHEET MSD01 FOR LAKE WASHINGTON LOOP SIGNS DETAIL

CONSTRUCTION NOTES:

- ① PLASTIC BIKE LANE BUFFER AND RPM'S PER KSD FIGURE 4-004
- ② 4" DOUBLE YELLOW PAINT LINE AND RPM'S PER KSD FIGURE 4-002
- ③ 4" WHITE PLASTIC SOLID LANE LINE PER WSDOT STD PLAN M-20.10-04
- ④ 4" WHITE PLASTIC DOTTED EXTENSION LINE PER WSDOT STD PLANS M-20.20-02 AND M-20.10-03
- ⑤ PLASTIC STOP LINE PER KSD STD FIGURE 4-001
- ⑥ RAPID FLASHING BEACON AND SIGNAGE, SEE SHEET MSD01 DETAIL 1
- ⑦ INSTALL SIGN ON EXISTING SIGNAL POLE PER WSDOT STD PLAN G-30.10-04
- ⑧ 4" WHITE PLASTIC EDGE LINE, WITH WHITE TYPE 1 RPM'S, 5.0' O.C.
- ⑨ MATCH EXISTING STRIPING
- ⑩ MMA WARNING BAND PER DETAIL 3
- ⑪ 4" WIDE BROKEN YELLOW PAINTED LINE PER WSDOT STD PLAN M-9.60-00
- ⑫ 4" WIDE SOLID YELLOW PAINTED LINE PER WSDOT STD PLAN M-9.60-00
- ⑬ TYPE 2SR (RIGHT) LOW SPEED TRAFFIC ARROW PER WSDOT STD PLAN M-24.40-02

SIGN SCHEDULE				
SIGN NO.	SIGN CODE	DESCRIPTION	STA. LOC.	SIZE/REMARKS
③-1	R3-17	BIKE LANE	N/A	30 X 36
③-2	SPECIAL	LAKE WASHINGTON LOOP BIKE ROUTE LT	N/A	12 X 18, SEE NOTE 4
R3-1	R7-2	NO PARKING	N/A	12 X 18, KEEP EX. POST AND SPEED LIMIT SIGN



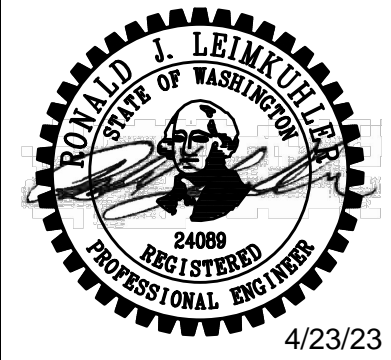
BID SET

No	Date	Revision	By	Appr

CITY OF KENMORE
Public Works Engineering
18120 68th Ave NE
Kenmore, WA 98028
425-398-8900

DRAWN BY: MRV
CHECKED BY: NDA
DATE: 04/25/2023
JOB No.: 2000107

DESIGNED BY: CJO
APPROVED BY: RJL



kpff
1601 5th Avenue, Suite 1600
Seattle, WA 98101
206.622.5822
www.kpff.com

175TH WAYFINDING CHANNELIZATION IMPROVEMENT

CHANNELIZATION PLAN

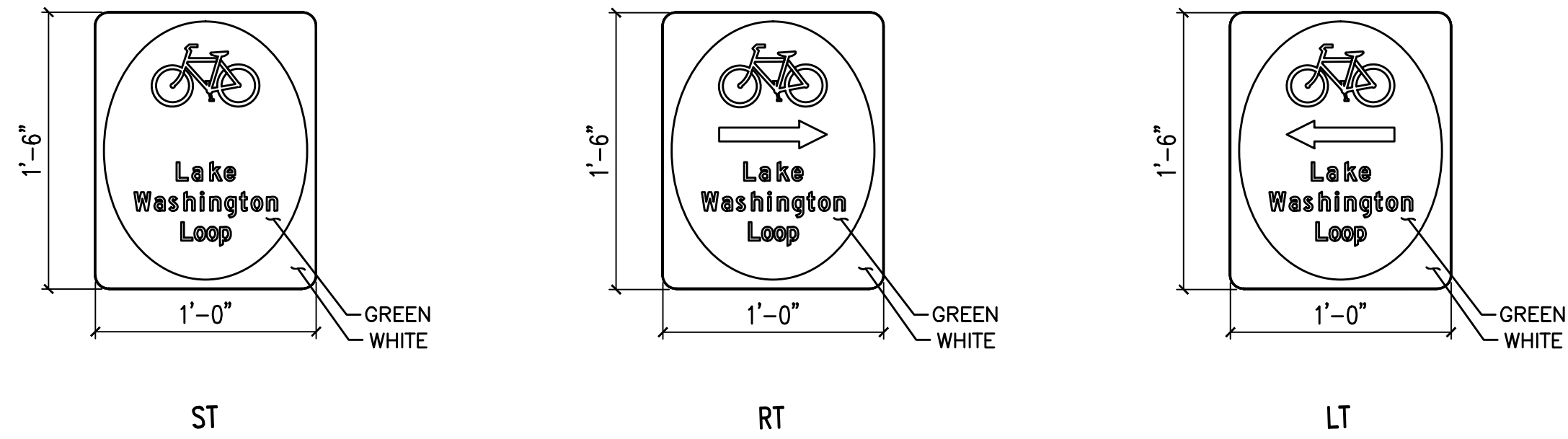
SHEET 9 OF 12

CH03

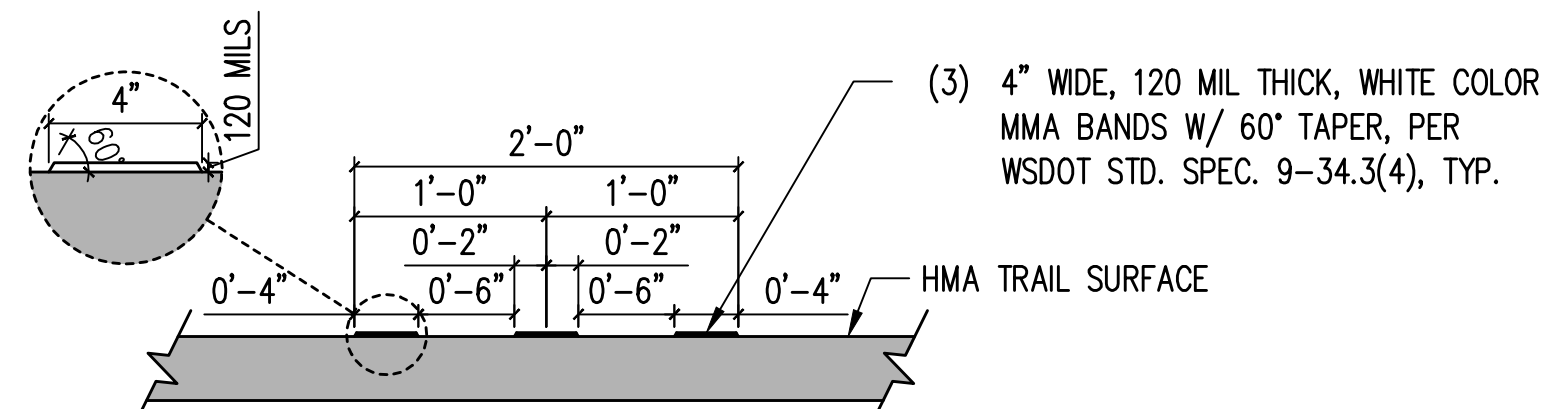
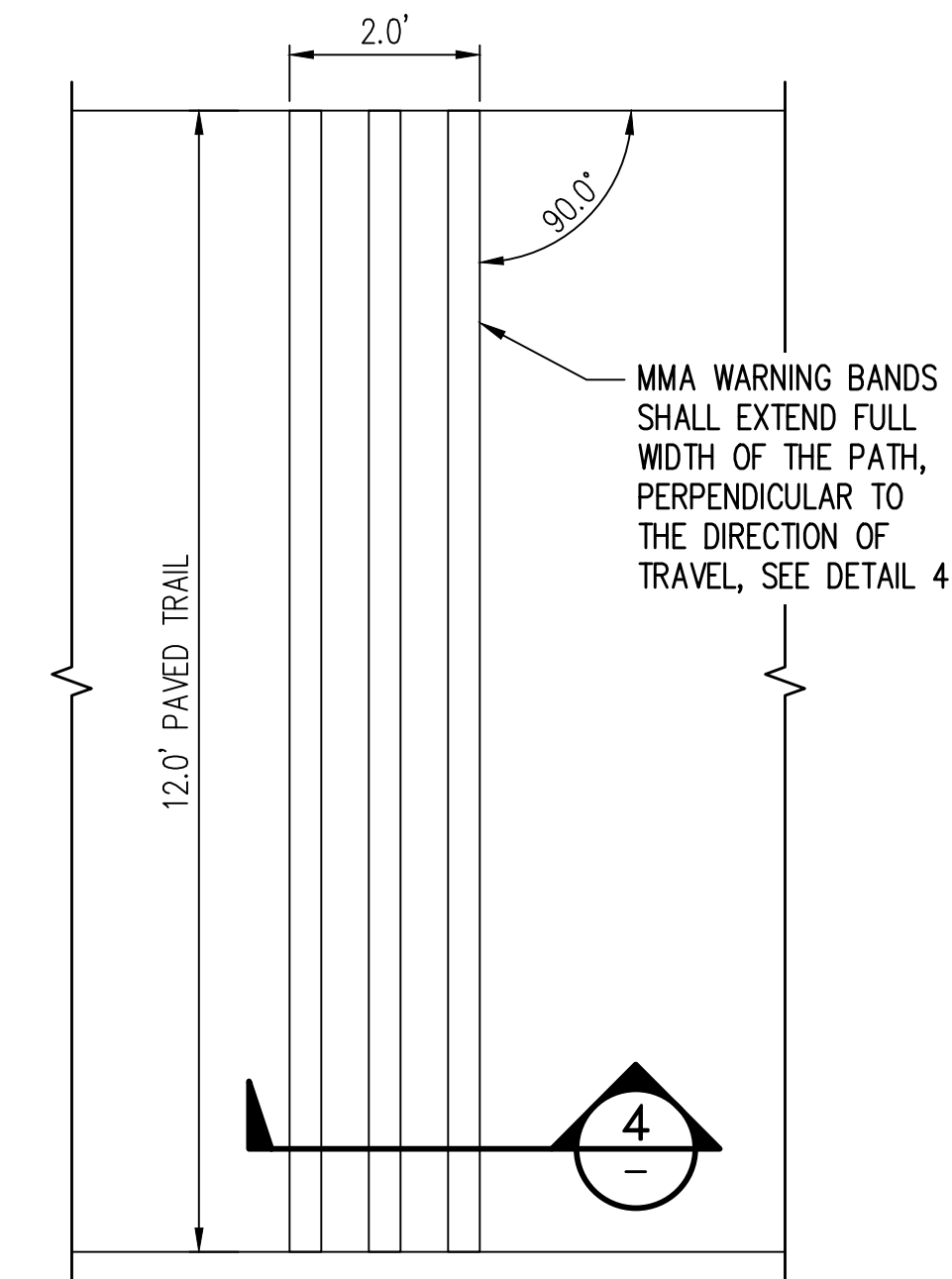
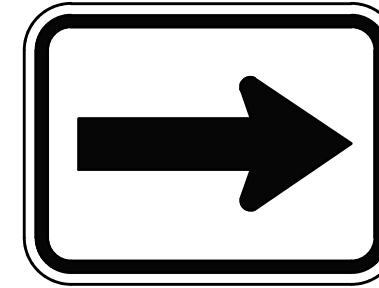
SCALE: 1"=20'



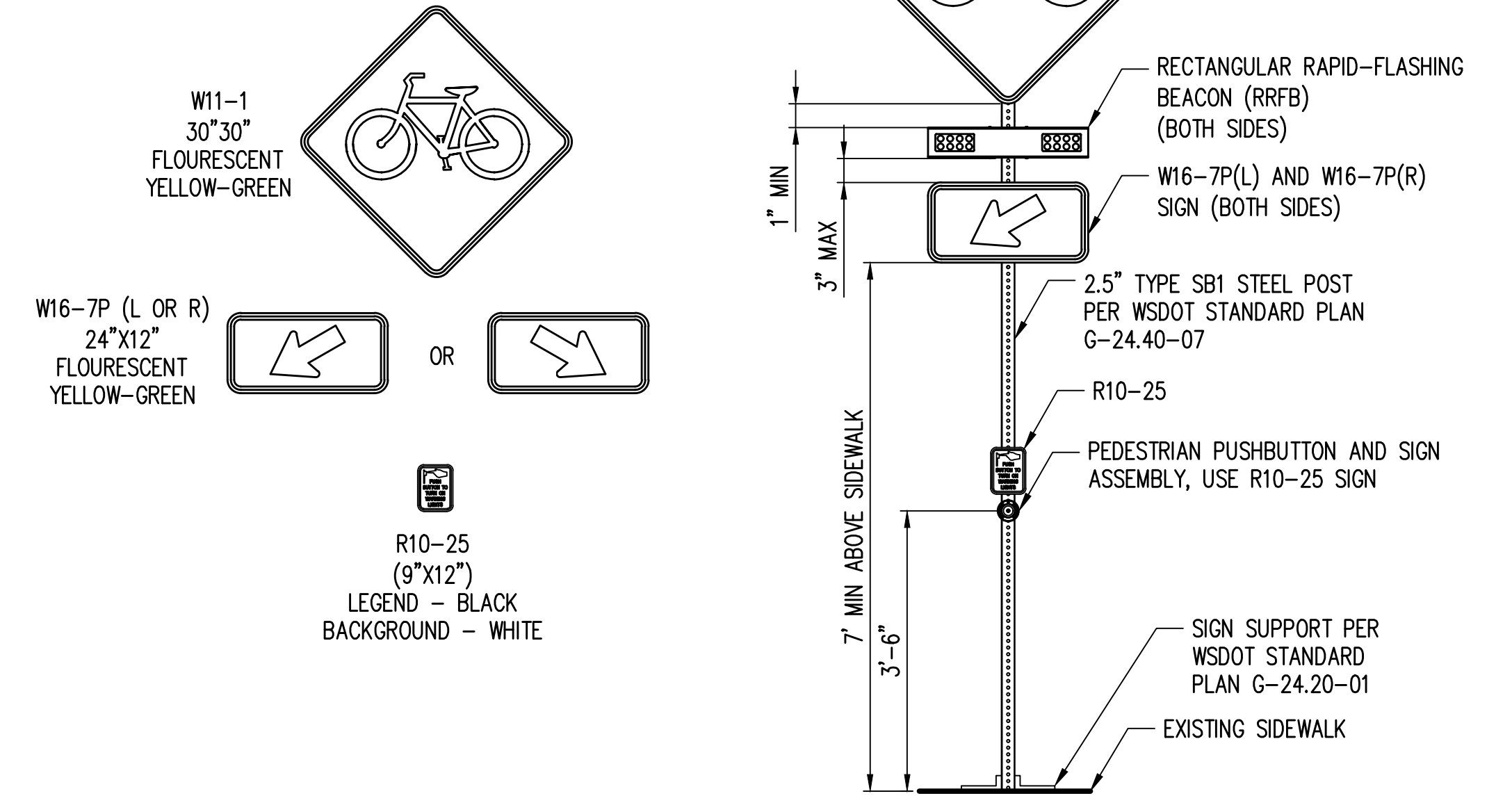
Name: MICHAELV Date: Apr 21, 2023-01:59:11pm File: \\kpf.com\Civil\2000001-2009999\2000107 Kenmore Trans On-Call (No. 19-C2098)\Task Order 14 - 175th Wayfinding\CADD\Sheets\KM15-MSD.dwg



LAKE WASHINGTON LOOP SIGNS



- SOLAR POWERED RRFB NOTES:**
1. SOLAR POWER SHALL BE MOUNTED ON TOP OF THE POST. ORIENT SOLAR PANEL FACING SOUTH PER MANUFACTURER AND CITY RECOMMENDATION.
 2. MOUNT RRFB AND SOLAR PANEL TO POST PER THE MANUFACTURER'S INSTRUCTIONS.
 3. WIRE RRFB AND SOLAR PANEL PER MANUFACTURER'S INSTRUCTIONS.



RRFB BIKE CROSSING SIGN

BID SET



No	Date	Revision	By	Appr

CITY OF KENMORE
 Public Works Engineering
 18120 68th Ave NE
 Kenmore, WA 98028
 425-398-8900

DRAWN BY: MRV
 CHECKED BY: NDA
 DATE: 04/25/2023
 J O B No. : 2000107



kpf
 1601 5th Avenue, Suite 1600
 Seattle, WA 98101
 206.622.5822
 www.kpff.com

175TH WAYFINDING CHANNELIZATION IMPROVEMENT
 MISCELLANEOUS DETAILS

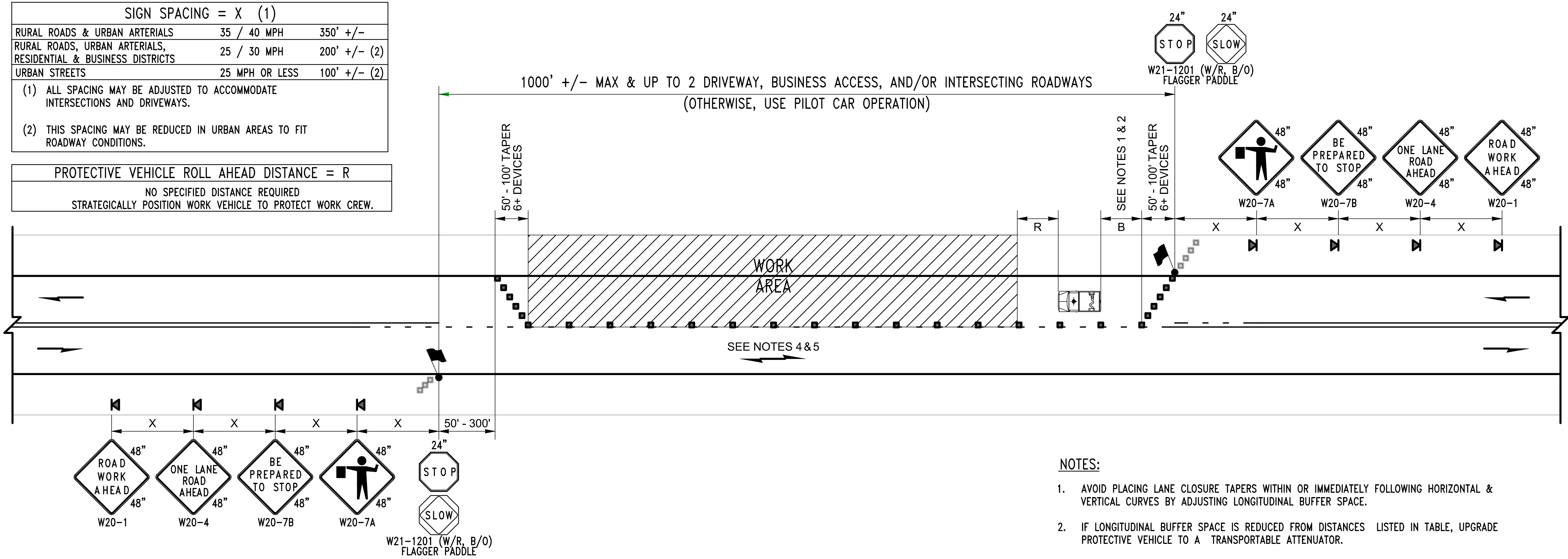
SHEET 10 OF 12
MSD01
 SCALE: NTS

Name: MICHAELV Date: Apr 21, 2023-01:59:18pm File: \\kpf.com\Civil\2000001-2009999\200107 Kenmore Trans On-Call (No. 19-C2098)\Task Order 14 - 175th Wayfinding\CADD\Sheets\KM175-TC.dwg

SIGN SPACING = X (1)		
RURAL ROADS & URBAN ARTERIALS	35 / 40 MPH	350' +/-
RURAL ROADS, URBAN ARTERIALS, RESIDENTIAL & BUSINESS DISTRICTS	25 / 30 MPH	200' +/- (2)
URBAN STREETS	25 MPH OR LESS	100' +/- (2)

(1) ALL SPACING MAY BE ADJUSTED TO ACCOMMODATE INTERSECTIONS AND DRIVEWAYS.
 (2) THIS SPACING MAY BE REDUCED IN URBAN AREAS TO FIT ROADWAY CONDITIONS.

PROTECTIVE VEHICLE ROLL AHEAD DISTANCE = R
NO SPECIFIED DISTANCE REQUIRED STRATEGICALLY POSITION WORK VEHICLE TO PROTECT WORK CREW.



LONGITUDINAL BUFFER SPACE = B										
SPEED (MPH)	25	30	35	40	45	50	55	60	65	70
LENGTH (feet)	155	200	250	305	360	425	495	570	645	730

CHANNELIZATION DEVICE SPACING (feet)		
MPH	TAPER	TANGENT
35/40	30	60
25/30	20	40

LEGEND:

- TEMPORARY SIGN LOCATION
- 28" REFLECTIVE TRAFFIC CONE (SEE NOTE 3)
- OPTIONAL CHANNELIZATION DEVICE
- PROTECTIVE VEHICLE (SEE NOTE 2)
- PORTABLE CHANGEABLE MESSAGE SIGN
- FLAGGER

NOTES:

- AVOID PLACING LANE CLOSURE TAPERS WITHIN OR IMMEDIATELY FOLLOWING HORIZONTAL & VERTICAL CURVES BY ADJUSTING LONGITUDINAL BUFFER SPACE.
- IF LONGITUDINAL BUFFER SPACE IS REDUCED FROM DISTANCES LISTED IN TABLE, UPGRADE PROTECTIVE VEHICLE TO A TRANSPORTABLE ATTENUATOR.
- 36" TRAFFIC CONES, 42" TALL CHANNELIZATION DEVICES, OR TRAFFIC SAFETY DRUMS OK.
- BICYCLISTS MAY BE COMBINED WITH ALTERNATING VEHICULAR TRAFFIC. BIKES TO CLEAR PRIOR TO FLAGGERS RELEASING ONCOMING TRAFFIC.
- ACCOMMODATE PEDESTRIANS VIA SHUTTLE THROUGH LANE CLOSURE, USING THE PAVED SHOULDER OPPOSITE THE WORK AREA, OR ANOTHER METHOD THE ENGINEER ACCEPTS.
- SEE STANDARD SPECIFICATIONS FOR ADDITIONAL REQUIREMENTS:
 - 1-07.8(1) HIGH-VISIBILITY APPAREL
 - 1-10.3(1)A FLAGGERS AND NIGHTTIME ILLUMINATION
 - 1-10.3(2)A TRAFFIC CONTROL PROCEDURES
 - 9-35.1 24-INCH STOP/SLOW PADDLE SIZE
- FOR PROJECT-SPECIFIC REQUIREMENTS, SEE SPECIAL PROVISIONS
- SIGNS ARE BLACK ON ORANGE UNLESS OTHERWISE INDICATED.
- ACTUAL CENTERLINE PAVEMENT MARKINGS MAY VARY.

BID SET

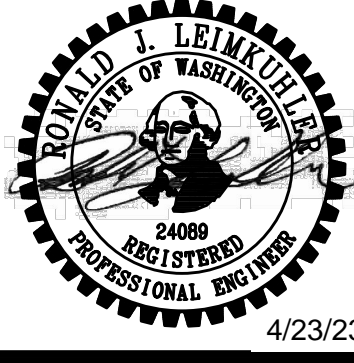


No	Date	Revision	By	Appr

CITY OF KENMORE
 Public Works Engineering
 18120 68th Ave NE
 Kenmore, WA 98028
 425-398-8900

DRAWN BY MRV
 CHECKED BY NDA
 DATE: 04/25/2023
 J O B No. : 2000107

DESIGNED BY CJO
 APPROVED BY RJL



kpff
 1601 5th Avenue, Suite 1600
 Seattle, WA 98101
 206.622.5822
 www.kpff.com

175TH WAYFINDING CHANNELIZATION IMPROVEMENT

TRAFFIC CONTROL PLAN

SHEET 11 OF 12

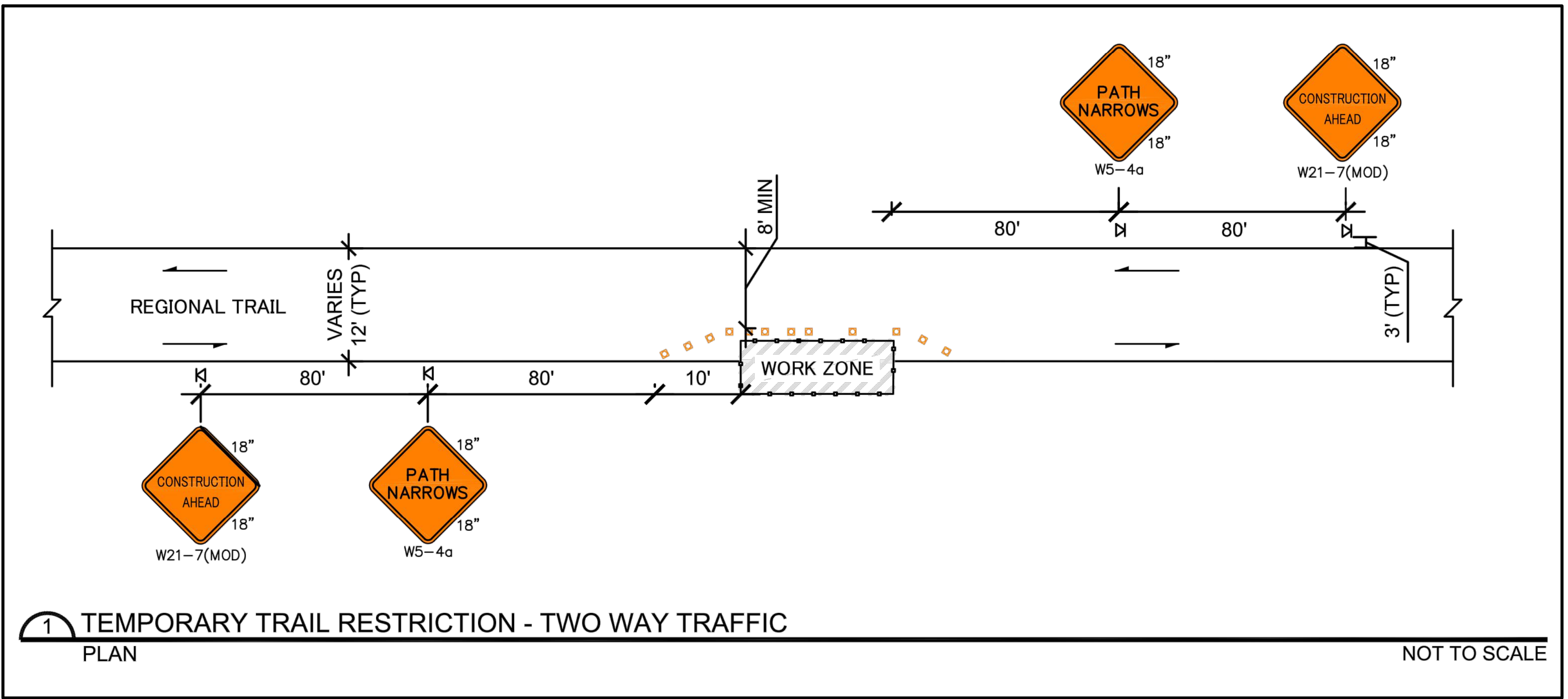
TC01

SCALE: NTS

Name: MICHAELV Date: Apr 21, 2023-01:59:18pm File: \\kpf.com\Civil\2000001-2009999\2000107 Kenmore Trans On-Call (No. 19-C2098)\Task Order 14 - 175th Wayfinding\CADD\Sheets\KM175-TC.dwg

LEGEND	
	TEMPORARY SIGN LOCATION
	CHANNELIZING DEVICES OR CONES
	DIRECTION OF TRAVEL

- NOTES**
- SEE SHEET 1 FOR IMPORTANT REQUIREMENTS APPLICABLE TO ALL TCPs. ADOPTION OF THIS TCP ASSUMES ACCEPTANCE OF THE CONDITIONS AND REQUIREMENTS LISTED ON SHEET 1.
 - ALL SIGNS ARE BLACK ON ORANGE.
 - A MINIMUM OF 3 FEET OF CLEARANCE SHOULD BE KEPT BETWEEN THE SIGNS AND THE EDGE OF TRAIL WHEREVER POSSIBLE. IN NO CASE SHALL THE SIGNS RESTRICT THE MINIMUM TRAVEL WIDTHS SHOWN.
 - WHENEVER POSSIBLE, THE WORK ZONE SHOULD BE MOVED AND THE TRAIL OPENED TO FULL WIDTH OUTSIDE OF WORKING HOURS.
 - CHAIN LINK FENCING OR BARRICADES MAY BE REQUIRED TO SECURE THE WORK ZONE.
 - AN OFF-DUTY POLICE OFFICER MAY BE REQUIRED FOR MANAGING TRAIL TRAFFIC ON HIGH-VOLUME TRAILS.
 - POST-MOUNTING OF SIGNS MAY BE REQUIRED BASED ON DURATION OF IMPACTS.
 - NUMBER OF FLAGGERS MAY BE MODIFIED DEPENDING ON SIZE OF WORK AREA AND SIGHT DISTANCE.
 - THE SIGN SPACING PROVIDED IS APPROXIMATE AND IS INTENDED FOR GUIDANCE PURPOSES ONLY. SIGNS SHOULD BE PLACED WITH ENGINEERING JUDGEMENT AND ADJUSTED BASED ON SITE CONDITIONS.
 - TRAFFIC CONTROL SHALL BE INSPECTED AND MAINTAIN IN GOOD WORKING ORDER. THE CONTRACTOR SHALL RESPOND TO AND MAY BE REQUIRED TO ADAPT TRAFFIC CONTROL MEASURES IN RESPONSE TO CONCERNS RAISED BY THE PUBLIC. MODIFICATIONS OR ADAPTATIONS TO TRAFFIC CONTROL SHALL REQUIRE APPROVAL FROM KING COUNTY PARKS AND APPROPRIATE LOCAL JURISDICTIONS AS APPLICABLE.
 - A WRITTEN AND VERBAL NOTICE OF 3 WEEKS SHALL BE PROVIDED TO KING COUNTY PARKS BEFORE IMPLEMENTING AN APPROVED TEMPORARY TRAIL RESTRICTION.



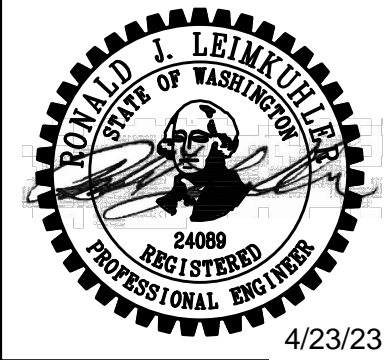
BID SET



No	Date	Revision	By	Appr

CITY OF KENMORE
 Public Works Engineering
 18120 68th Ave NE
 Kenmore, WA 98028
 425-398-8900

DRAWN BY: MRV
 CHECKED BY: NDA
 DATE: 04/25/2023
 DESIGNED BY: CJO
 APPROVED BY: RJL
 J O B No. : 2000107



kpf
 1601 5th Avenue, Suite 1600
 Seattle, WA 98101
 206.622.5822
 www.kpff.com

**175TH WAYFINDING
 CHANNELIZATION IMPROVEMENT**

TRAFFIC CONTROL PLAN

SHEET 12 OF 12

TC02

SCALE: NTS