



ADDENDUM NO. 1

175th Wayfinding Channelization Improvements Project Bid No. 23-C2902

5/5/2023
8 Pages


Bid Date: Tuesday May 16, 2023 at 2:00PM EXACTLY

TO: Prospective Bidders

This Addendum forms a part of the Contract Provisions and modifies the original Bidding Documents dated 5/5/23. Bidders must acknowledge receipt of this Addendum in the space provided on the Bid Form. Failure to do so may subject Bidder to disqualification.

1. Bid Proposal Sheets. The quantities for the following items have changed: A8, A8a, and A10.
2. Special Provisions, Section 8-20.
3. Plan sheets: GN01, TS01, PV02, and MSD01.

END OF ADDENDUM

Accepted by 
Kent Vaughan, PE
Senior Civil Engineer / Project Manager
City of Kenmore

Attachments: Bid proposal sheets, special provisions, construction plan sheets.



BID PROPOSAL SHEET

175th Wayfinding Channelization Improvements Project

Bid No.: 23-C2902

Having carefully examined all documents enclosed herein, the undersigned proposes to perform all Work in strict compliance with all documents, for the amount set forth below.

Schedule A - Base Bid

Work under this schedule includes: All work required under this contract.

Item No	Item Of Work	Bid Quantity	Unit	Unit Prices	Amount
<i>DIVISION 1 - General Requirements</i>					
A1.	Mobilization	1	LS		
A2.	Unexpected Site Changes	5,000	Dol	\$1.00	
A3.	Roadway Surveying	1	LS		
A4.	SPCC Plan	1	LS		
A5.	Project Temporary Traffic Control	1	LS		
<i>DIVISION 2 - Earthwork</i>					
A6.	Sawcutting	36	LF		
A7.	Removal of Structures and Obstructions	1	LS		
A8.	Roadway Excavation Incl. Haul	35	CY		
A8a.	Gravel Borrow Incl. Haul	6	CY		
<i>DIVISION 4 - Bases</i>					
A9.	Crushed Surfacing Top Course	15	Ton		

COMPANY NAME _____



BID PROPOSAL SHEET

175th Wayfinding Channelization Improvements Project

Bid No.: 23-C2902

<i>DIVISION 5 – Surface Treatments</i>					
A10.	HMA Cl. 3/8" PG 64-22	166	Ton		
A11.	Planing Bituminous Pavement	1,010	SY		
<i>DIVISION 7 – Utilities</i>					
A12.	High-Density Polyethylene (HDPE) Pipe 12 In. Diam.	70	LF		
A13.	Catch Basin Type 1	2	EA		
A14.	Connection to Drainage Structures	2	EA		
<i>DIVISION 8 – Miscellaneous Construction</i>					
A15.	Erosion/Water Pollution Control	1	LS		
A16.	SWPPP	1	LS		
A17.	Inlet Protection	7	EA		
A18.	Extruded Curb	40	LF		
A19.	Relocate Mailbox	1	EA		
A20.	RRFB Signal System	1	LS		
A21.	Permanent Signing	1	LS		
A22.	Plastic Line	6,060	LF		
A23.	Plastic Yield Symbol	6	EA		
A24.	Plastic Bicycle Symbol	6	EA		
A25.	Plastic Stop Line	17	LF		
A26.	Plastic Arrow	3	EA		

COMPANY NAME _____



BID PROPOSAL SHEET

175th Wayfinding Channelization Improvements Project

Bid No.: 23-C2902

A27.	MMA Warning Band	36	LF		
A28.	Green MMA Bike Crossing	50	SF		
A29.	Raised Pavement Marker Type 2	3	Hund		

TOTAL SCHEDULE A BID _____
(Figures)

(Words)

COMPANY NAME _____

SPECIAL PROVISIONS



1 All work shall be performed as shown in the Plans in accordance with applicable
2 Standard Specifications and Standard Plans included herein, and the following Special
3 Provisions.

4
5 Work shall include the supply, testing and installation of all hardware, and when
6 specified, the modification of to the existing system.

8 **8-20.3(20) Rectangular Rapid Flashing Beacons System**

ADDENDUM 01

9 (*****)

10
11 NEW Section:

12
13 A Solar Powered Rectangular Rapid Flashing Beacon (RRFB) system with overhead
14 light shall be furnished and installed by the Contractor and shall comply with the
15 Federal Highway Administration's (FHWA) approval for the use for pedestrian and
16 school crossings and shall include flashing, rectangular-shaped, high intensity LEDs,
17 associated signs, push buttons, passive detection, solar panel, and assemblies as
18 shown on the Plans. The lights shall be activated by push button and/or passive
19 detection as shown on the plans. All the components shall be installed per
20 manufacturer's recommendations, per the Plans and the method and locations of
21 installation shall be approved by the Engineer in the field, prior to drilling holes in the
22 supporting poles.

23
24 The RRFB Signal System shall be supplied by the following manufacturer or approved
25 equal.

26
27 Model: SC315-G-OHL, RRFB signal system with overhead light

28
29 Carmanah Technologies Corp.

30 250 Bay Street

31 Victoria, BC, Canada

32 1-844-412-8395

33 www.carmanah.com

34 **8-20.4 Measurement**

35 (*****)

36
37
38 SUPPLEMENT this section with the following:

39
40 When a bid item is shown as lump sum in the proposal, no specific unit of
41 measurement will apply, but measurement will be for the sum total of all items for a
42 complete system to be furnished and installed.

43
44 "RRFB Signal System", per lump sum.

Name: \Anderson Date: May 05, 2023-09:49:50am File: Z:\2000001-2009999\2000107 Kenmore Trans On-Call (No. 19-C2098)\Task Order 14 - 175th Wayfinding\CADD\Sheets\KM175-GN.dwg

CONTROL POINT TABLE				
POINT	NORTHING	EASTING	ELEVATION	DESCRIPTION
1	279338.4280	1291993.8220	35.5000	MAGNAIL
2	279528.8100	1291982.1540	35.5200	MAGNAIL
3	279581.0530	1291841.0510	29.2800	MAGNAIL
4	279554.7140	1291645.5200	26.7500	MAGNAIL
5	279697.4880	1291500.7800	30.6300	MAGNAIL
6	279833.7040	129255.7110	33.1900	HUB/MAGNAIL
7	279841.5140	1291025.4200	33.4000	MAGNAIL
8	279861.7870	1290744.3420	35.4000	MAGNAIL

GENERAL NOTES:

- EXISTING UTILITIES HAVE BEEN LOCATED BASED ON BEST AVAILABLE INFORMATION. CONTRACTOR IS RESPONSIBLE TO VERIFY UTILITY LOCATIONS AND NOTIFY ENGINEER IF THERE IS A CONFLICT WITH PROPOSED FEATURES.
- PARCEL LINES ARE APPROXIMATE AND ARE FOR REFERENCE ONLY.

BASIS OF MERIDIAN:

WASHINGTON STATE PLANE COORDINATE SYSTEM, NAD 83/91, NORTH ZONE 4601.

VERTICAL DATUM:

NAVD 88 CONTRACTOR TO VERIFY VERTICAL DATUM WITH TIES TO TOPOGRAPHIC FEATURES AND PROVIDED CONTROL POINTS PRIOR TO START OF CONSTRUCTION.

UTILITY NOTE:

UTILITIES SHOWN HEREON ARE PER KPFF ON SITE SURVEY OF SURFACE FEATURES IN CONJUNCTION WITH UNDERGROUND UTILITY LOCATES PERFORMED BY KPFF. AS WELL AS AS-BUILT DATA ON FILE AT THE OFFICE OF KPFF. ALL UTILITIES SHOWN HEREON SHOULD BE CONSIDERED APPROXIMATE ONLY AND SHOULD BE VERIFIED PRIOR TO EXCAVATION.

BOUNDARY NOTE:

RIGHT OF WAY INFORMATION SHOWN HEREON IS PER BEST AVAILABLE RECORD INFORMATION AND TIES TO LOCAL MONUMENTATION. PROPERTY LINES SHOWN HEREON ARE PER KING COUNTY GIS AND ARE SHOWN FOR GRAPHICAL PURPOSES ONLY AND SHOULD NOT BE CONSTRUED AS A SURVEYED BOUNDARY LINE.

METHOD OF SURVEY:

CONTROL SURVEY PERFORMED USING GPS/RTK METHODS WITH THE USE OF TOPCON GR5 RECEIVERS, SUPPLEMENTAL CONTROL SURVEY AND TOPOGRAPHIC SURVEY PERFORMED USING A TOPCON GT 503 ROBOTIC TOTAL STATION.

THE SURVEY WORK PERFORMED DURING THE COURSE OF THIS SURVEY MEETS OR EXCEEDS THE STANDARDS AS SET FORTH IN WAC 332-130-090.

SURVEY WORK PERFORMED IN MAY OF 2022.

ABBREVIATIONS:

Δ	DELTA
AC	ASPHALT CONCRETE
ACP	ASPHALT CONCRETE PAVEMENT
AP	ANGLE POINT
APPR	APPROVED
APPROX	APPROXIMATE
AVE	AVENUE
BBOC	BOTTOM OF BACK OF CURB
BLDG	BUILDING
CB	CATCH BASIN
CCTV	CLOSED CIRCUIT TELEVISION
CKRS	CITY OF KENMORE ROAD STANDARDS
CL	CENTERLINE
CL	CLASS
CONC	CONCRETE
CONT'D	CONTINUED
CSBC	CRUSHED SURFACING BASE COURSE
CSTC	CRUSHED SURFACING TOP COURSE
CW	CONCRETE WALKWAY
CY	CUBIC YARDS
DIA	DIAMETER
DI	DUCTILE IRON
DWG	DRAWING
DWY	DRIVEWAY
E	EAST, EASTING
EG	EXISTING GRADE
EL	ELEVATION
EX/EXIST	EXISTING
ESMT	EASEMENT
FG	FINISHED GRADE
FL	FLOW LINE
FOC	FACE OF CURB
FT	FOOT/FEET
GAL	GALLON
GPS	GLOBAL POSITIONING SYSTEM
HMA	HOT MIXED ASPHALT

ABBREVIATIONS CONT'D:

HT	HEIGHT
IE	INVERT ELEVATION
IN	INCH
H, HORIZ	HORIZONTAL
KC	KING COUNTY
KCRS	KING COUNTY ROAD DESIGN AND CONSTRUCTION STANDARDS
KSD	KENMORE STANDARD DETAILS
L	LENGTH
LF	LINEAR FEET
LSCAPE	LANDSCAPE
LT	LEFT
MAX	MAXIMUM
MIN	MINIMUM
MH	MAINTENANCE HOLE
MIN	MINIMUM
MMA	METHYL-METHACRYLATE
MPH	MILES PER HOUR
MUTCD	MANUAL ON TRAFFIC CONTROL DEVICES
N	NORTH, NORTHING
N/A	NOT APPLICABLE
NAVD	NORTH AMERICAN VERTICAL DATUM
NE	NORTHEAST
NIC	NOT IN CONTRACT
NO.	NUMBER
NTS	NOT TO SCALE
O.C.	ON CENTER
OD	OUTSIDE DIAMETER
PC	POINT OF CURVATURE
PCC	POINT OF COMPOUND CURVE
PCCP	PORTLAND CEMENT CONCRETE PAVEMENT
P.E.	PROFESSIONAL ENGINEER
PG	PROPOSED GRADE
PO	POST OFFICE
POB	POINT OF BEGINNING
POE	POINT OF END
PK	SURVEY CONTROL NAIL

ABBREVIATIONS CONT'D:

PL	PLACE
PT	POINT OF TANGENCY
PVMT	PAVEMENT
QTY	QUANTITY
R	RADIUS, RANGE
RD	ROAD
ROW, R/W	RIGHT-OF-WAY
RRFB	RAPID RECTANGULAR FLASHING BEACON
RT	RIGHT
RTK	REAL TIME KINEMATIC
S	SOUTH
SD	STORM DRAIN
SEC	SECTION
SHT	SHEET
SPEC	SPECIFICATIONS
ST	STREET
STA	STATION
STD	STANDARD
SW	SOUTHWEST
SY	SQUARE YARDS
T	TOWNSHIP/TANGENT
TEL	TELEPHONE
TEMP	TEMPORARY
TYP	TYPICAL
V, VERT	VERTICAL
W	WEST/WATER
W/	WITH
WA	WASHINGTON
WM	WILLAMETTE MERIDIAN
WSDOT	WASHINGTON STATE DEPARTMENT OF TRANSPORTATION

LEGEND:

— SS — SS — SS —	SANITARY SEWER
— SD — SD —	STORM DRAIN
— OH — OH — OH —	OVERHEAD UTILITY
— G — G — G —	GAS LINE
— W — W — W —	WATER LINE
— P — P — P —	UNDERGROUND POWER
— TC — TC — TC —	UNDERGROUND TELECOMMUNICATIONS
— X — X — X — X —	FENCE AS NOTED
-----	EDGE OF PAVEMENT
-----	EDGE OF GRAVEL
-----	SECTION LINE
-----	CENTER LINE
-----	RIGHT OF WAY
	CONCRETE HATCH
	TRUNCATED DOME HATCH

LEGEND CONT'D:

	FOUND MONUMENT
	CONTROL POINTS
	LIGHT JUNCTION BOX
	POWER MAN HOLE
	UTILITY POLE
	TRAFFIC SIGNAL POLE
	TRAFFIC LIGHT
	STREET LIGHT
	YARD LIGHT
	ANCHOR
	JUNCTION BOX
	TELEPHONE POLE
	TELECOMMUNICATIONS MAN HOLE
	TELECOMMUNICATIONS VAULT
	TELECOMMUNICATIONS PEDESTAL

LEGEND CONT'D:

	TRAFFIC SIGNAL CABINET
	FIRE HYDRANT
	WATER METER
	WATER VALVE
	GAS METER
	GAS VALVE
	SANITARY SEWER MAN HOLE
	STORM DRAIN MAN HOLE
	CATCH BASIN
	ROCK
	MAILBOX
	SIGN AS NOTED
	CONIFER AS NOTED
	DECIDUOUS AS NOTED

BID SET

1	5/5/23	ADDENDUM 01 - THICKEND EDGE	CJO	NDA
No	Date	Revision	By	Appr

CITY OF KENMORE
Public Works Engineering
18120 68th Ave NE
Kenmore, WA 98028
425-398-8900

DRAWN BY
MRV
CHECKED BY
NDA
DATE: 04/25/2023
J O B No. : 2000107



kpff
1601 5th Avenue, Suite 1600
Seattle, WA 98101
206.622.5822
www.kpff.com

**175TH WAYFINDING
CHANNELIZATION IMPROVEMENT**

**ABBREVIATIONS,
LEGEND, & SURVEY NOTES**

SHEET 2 OF 12

GN01

SCALE: N/A

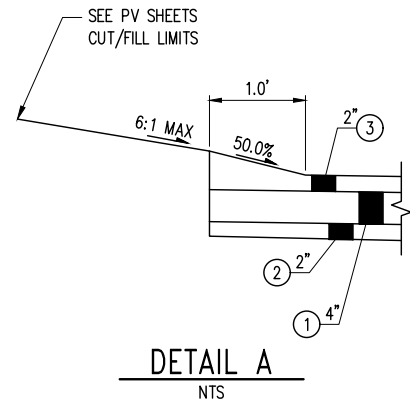
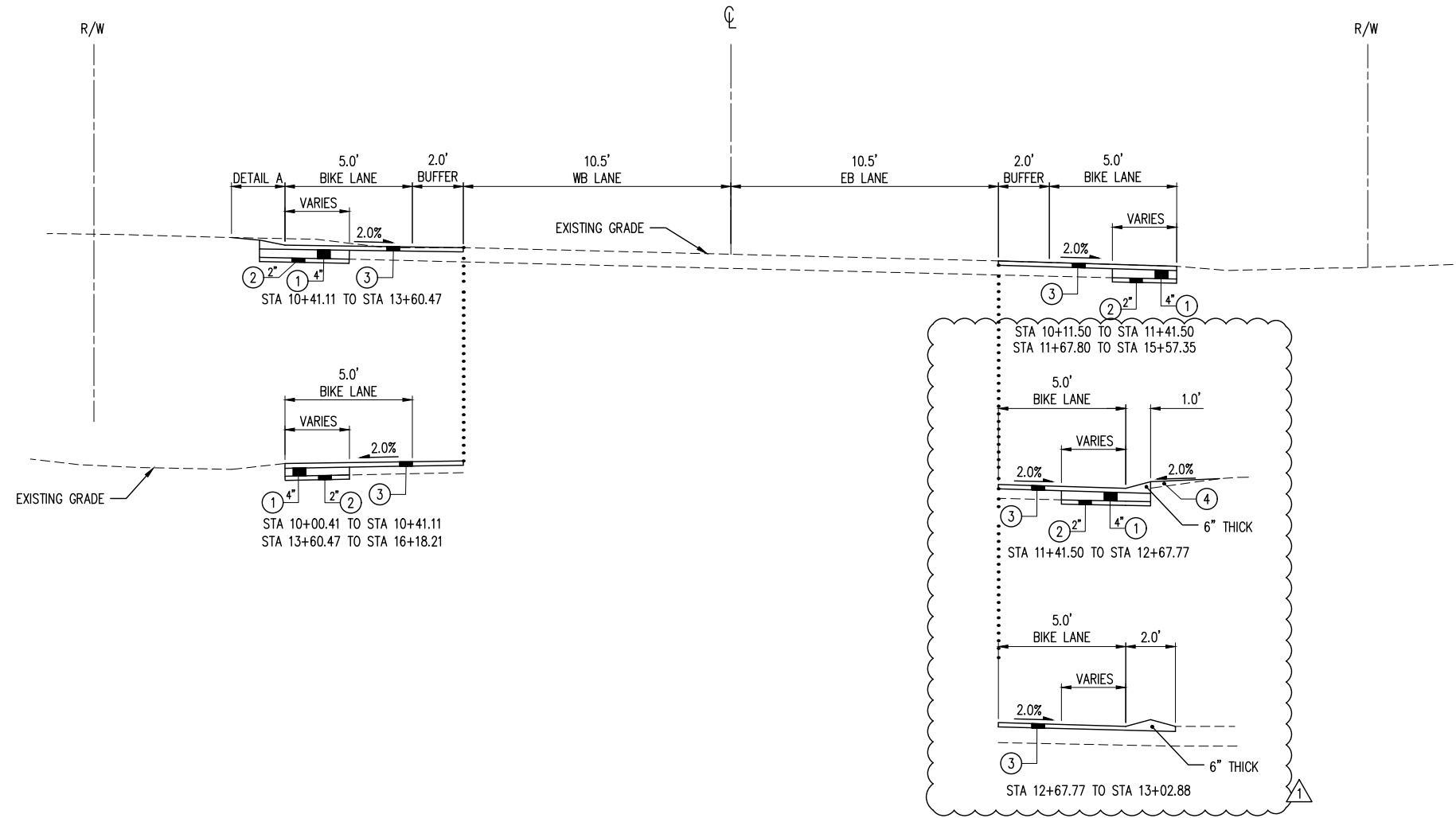


Know what's below.
Call before you dig.

Name: \Anderson Date: May 05, 2023-08:02:37am File: Z:\2000001-2009999\2000107 Kenmore Trans On-Call (No. 19-C2098)\Task Order 14 - 175th Wayfinding\CADD\Sheets\KM175-TS.dwg

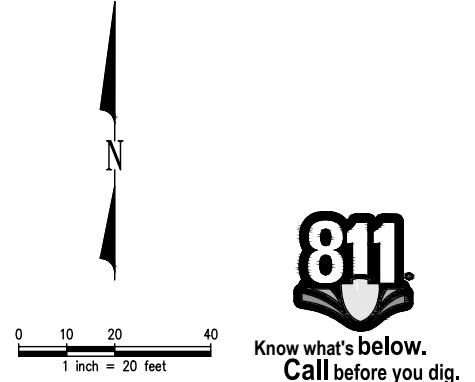
CONSTRUCTION NOTES:

- ① HMA CL. 3/8", PG 64-22
- ② CRUSHED SURFACING TOP COURSE
- ③ 2" BITUMINOUS PLANING, 2" HMA CL. 3/8", PG 64-22 OVERLAY
- ④ GRAVEL BORROW



NE 175TH ST TYPICAL SECTIONS
STA 10+00.41 TO STA 16+18.21

BID SET



①	5/5/23	ADDENDUM 01 - THICKEND EDGE	CJO	NDA
No	Date	Revision	By	Appr

CITY OF KENMORE
Public Works Engineering
18120 68th Ave NE
Kenmore, WA 98028
425-398-8900

DRAWN BY
MRV
CHECKED BY
NDA
DATE: 04/25/2023
J O B No. : 2000107

DESIGNED BY
CJO
APPROVED BY
RJL



kpff
1601 5th Avenue, Suite 1600
Seattle, WA 98101
206.622.5822
www.kpff.com

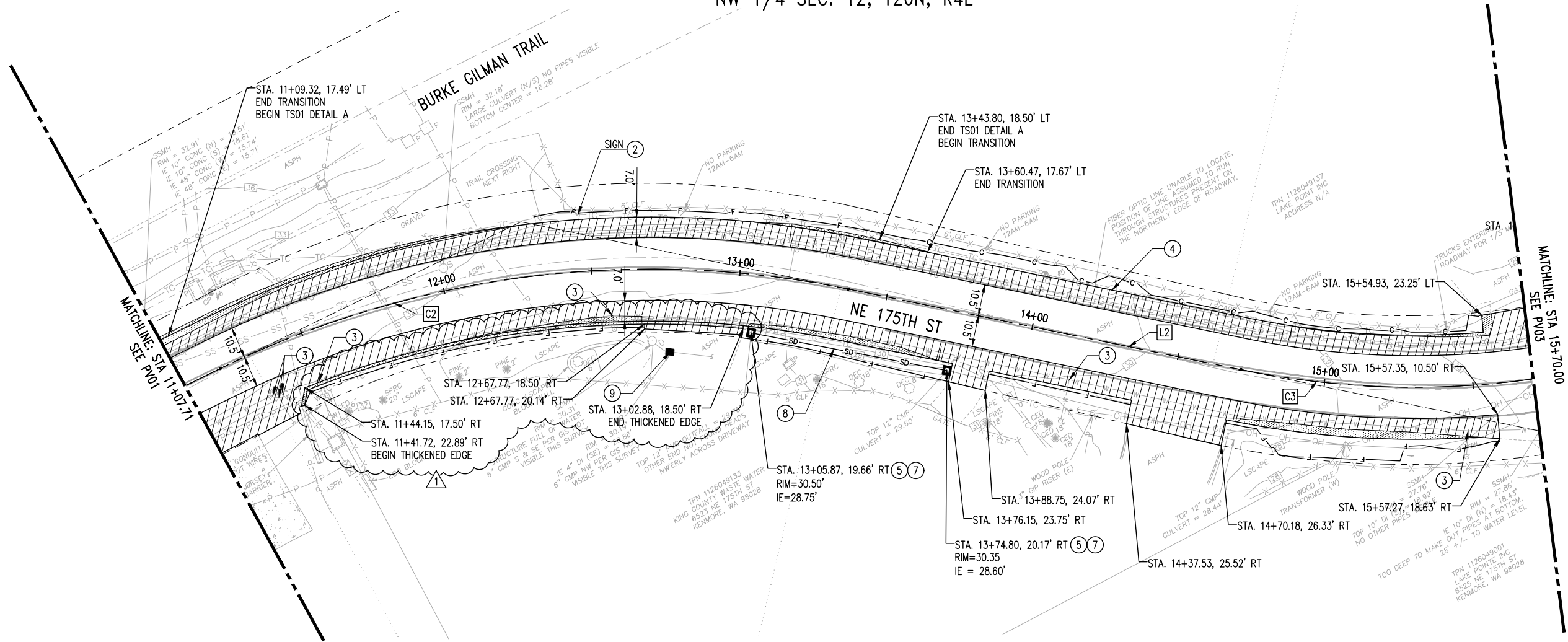
**175TH WAYFINDING
CHANNELIZATION IMPROVEMENT**

TYPICAL SECTIONS

SHEET 3 OF 12

TS01

SCALE: 1"=20'



LEGEND:

	RIGHT OF WAY
	ROADWAY CENTERLINE
	FILL LINE
	CUT LINE
	12" STORM DRAIN
	6" HMA CL. 3/8" PG-64-22 ON 2" CSTC
	2" PLANING BITUMINOUS PAVEMENT, 2" HMA CL. 3/8" PG 64-22 OVERLAY

GENERAL NOTES:

- REFER TO CHANNELIZATION PLANS FOR SIGN LOCATIONS

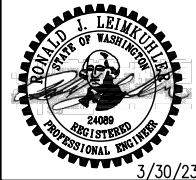
- CONSTRUCTION NOTES:**
- CEMENT CONCRETE EXTRUDED CURB PER KSD FIGURE 8-009
 - PRESERVE AND PROTECT FEATURE AS NOTED
 - ADJUST WATER VALVE TO GRADE (BY NUD)
 - ADJUST RIM TO GRADE (BY MCI VERIZON)
 - CONNECTION TO EXISTING STORM SEWER
 - REMOVE RECTANGULAR FRAME GRATE AND RETURN TO CITY YARD, FURNISH AND INSTALL DIAGONAL SLOTTED GRATE PER KSD FIGURE 7-008
 - CATCH BASIN TYPE 1 PER KSD STD FIGURE 7-003
 - INSTALL 12" HDPE STORM PIPE
 - STORM DRAIN INLET PROTECTION PER WSDOT STD PLAN I-40.20-00
 - SAWCUTTING
 - CONSTRUCT MAILBOX CLUSTER PER KSD STD FIGURE 6-005
 - REMOVE ECO BLOCKS AND RELOCATE PER ENGINEER

Name: MICHAELV Date: May 04, 2023-12:04:06pm File: \\kpf.com\Civil\2000001-2009999\2000107 Kenmore Trans On-Call (No. 19-C2099)\Task Order 14 - 175th Wayfinding\CADD\Sheets\KM175-PV.dwg

1	5/5/23	ADDENDUM 01 - THICKEND EDGE	CJO	NDA
No	Date	Revision	By	Appr

CITY OF KENMORE
Public Works Engineering
18120 68th Ave NE
Kenmore, WA 98028
425-398-8900

DRAWN BY
MRV
CHECKED BY
NDA
DATE: 04/25/2023
JOB No. : 2000107



kpf
1601 5th Avenue, Suite 1600
Seattle, WA 98101
206.622.5822
www.kpff.com

**175TH WAYFINDING
CHANNELIZATION IMPROVEMENT**

PAVING PLAN

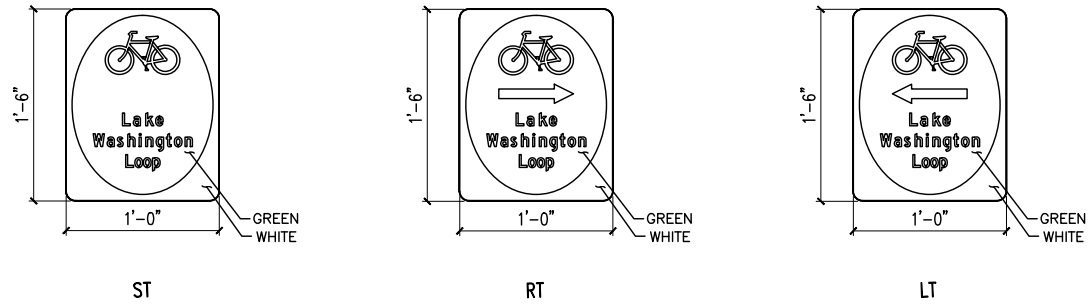
SHEET 5 OF 12

PV02

SCALE: 1"=20'

BID SET

Name: Wanderson Date: May 05, 2023-09:44:39am File: Z:\2000001-2009999\2000107 Kenmore Trans On-Call (No. 19-C2098)\Task Order 14 - 175th Wayfinding\CADD\Sheets\KM175-MSD.dwg



LAKE WASHINGTON LOOP SIGNS

NTS



R2-1



R5-1B



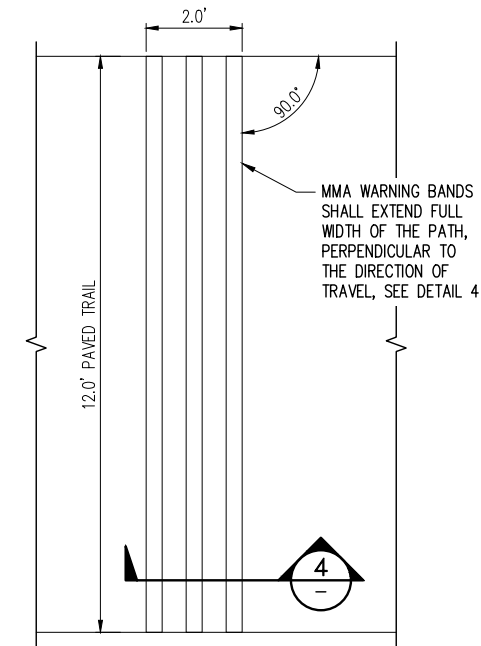
R3-17



M6-1



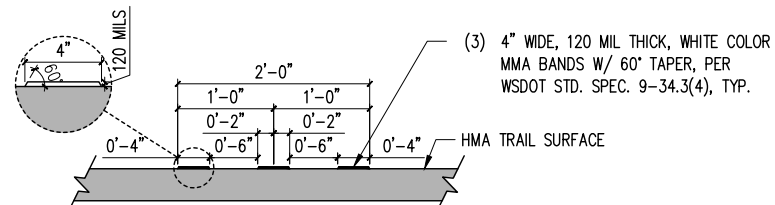
R3-17B



MMA WARNING BAND

NTS

3 CH01



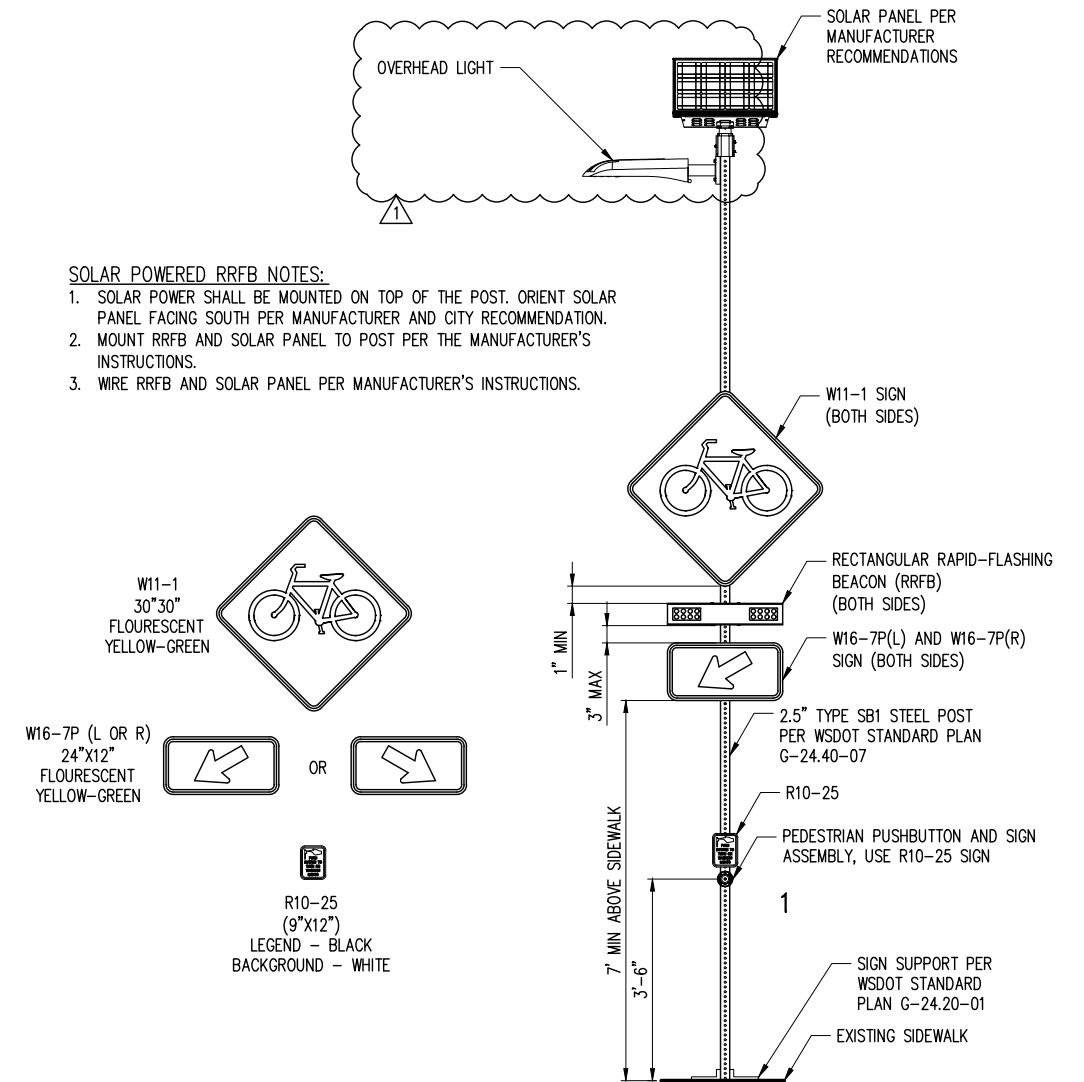
MMA WARNING BAND

NTS

4 CH01

SOLAR POWERED RRFB NOTES:

- SOLAR POWER SHALL BE MOUNTED ON TOP OF THE POST. ORIENT SOLAR PANEL FACING SOUTH PER MANUFACTURER AND CITY RECOMMENDATION.
- MOUNT RRFB AND SOLAR PANEL TO POST PER THE MANUFACTURER'S INSTRUCTIONS.
- WIRE RRFB AND SOLAR PANEL PER MANUFACTURER'S INSTRUCTIONS.



RRFB BIKE CROSSING SIGN

NTS

CH01

BID SET



Know what's below. Call before you dig.

5/5/23	ADDENDUM 01 - THICKEND EDGE	CJO	NDA
No	Date	Revision	By

CITY OF KENMORE
Public Works Engineering
18120 68th Ave NE
Kenmore, WA 98028
425-398-8900

DRAWN BY MRV
CHECKED BY NDA
DATE: 04/25/2023
JOB No.: 2000107



kpff
1601 5th Avenue, Suite 1600
Seattle, WA 98101
206.622.5822
www.kpff.com

175TH WAYFINDING
CHANNELIZATION IMPROVEMENT

MISCELLANEOUS DETAILS

SHEET 10 OF 12

MSD01

SCALE: NTS